

Datasheet for ABIN517853
anti-MAP3K3 antibody (AA 1-90)[Go to Product page](#)

2 Images

Overview

Quantity:	100 µg
Target:	MAP3K3
Binding Specificity:	AA 1-90
Reactivity:	Human
Host:	Rabbit
Clonality:	Polyclonal
Conjugate:	This MAP3K3 antibody is un-conjugated
Application:	Western Blotting (WB), Proximity Ligation Assay (PLA)

Product Details

Purpose:	Rabbit polyclonal antibody raised against a full-length human MAP3K3 protein.
Immunogen:	MAP3K3 (AAH10464.1, 1 a.a. ~ 90 a.a) full-length human protein.
Sequence:	MNEANVMLPY SGKEEPVLPV AMTLPLPGRG PRCGTAATEG GSSFVNAVVS VLQVGVTLMML YPVSKLETVC ALWALSTPAL GLGLGCIEKS
Cross-Reactivity:	Human
Characteristics:	Antibody reactive against mammalian transfected lysate.

Target Details

Target:	MAP3K3
Alternative Name:	MAP3K3 (MAP3K3 Products)

Target Details

Background:	Full Gene Name: mitogen-activated protein kinase kinase kinase 3 Synonyms: MAPKKK3,MEKK3
Gene ID:	4215
Pathways:	MAPK Signaling

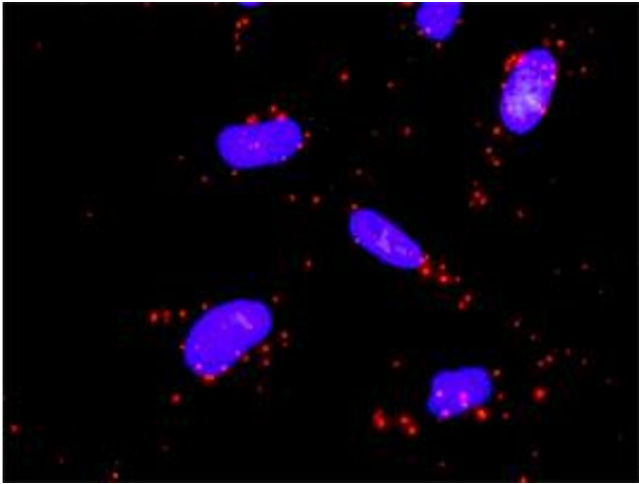
Application Details

Application Notes:	Optimal working dilution should be determined by the investigator.
Restrictions:	For Research Use only

Handling

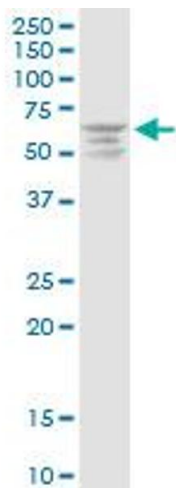
Buffer:	In 1x PBS, pH 7.4
Handling Advice:	Aliquot to avoid repeated freezing and thawing.
Storage:	-20 °C
Storage Comment:	Store at -20°C or lower. Aliquot to avoid repeated freezing and thawing.

Images



Proximity Ligation Assay

Image 1. Proximity Ligation Analysis of protein-protein interactions between MAP3K3 and MAP2K5. HeLa cells were stained with anti-MAP3K3 rabbit purified polyclonal 1:1200 and anti-MAP2K5 mouse monoclonal antibody 1:50. Each red dot represents the detection of protein-protein interaction complex, and nuclei were counterstained with DAPI (blue).



Western Blotting

Image 2. MAP3K3 MaxPab rabbit polyclonal antibody.
Western Blot analysis of MAP3K3 expression in HeLa.