

Datasheet for ABIN517881
anti-c-MET antibody (AA 1-1390)



[Go to Product page](#)

3 Images

Overview

Quantity:	50 µg
Target:	c-MET (MET)
Binding Specificity:	AA 1-1390
Reactivity:	Human
Host:	Mouse
Clonality:	Polyclonal
Conjugate:	This c-MET antibody is un-conjugated
Application:	Western Blotting (WB), Proximity Ligation Assay (PLA)

Product Details

Purpose:	Mouse polyclonal antibody raised against a full-length human MET protein.
Immunogen:	MET (NP_000236, 1 a.a. ~ 1390 a.a) full-length human protein.
Sequence:	<p>MKAPAVLAPG ILVLLFTLVQ RSNGECKEAL AKSEMNVNMK YQLPNFTAET PIQNVILHEH HIFLGATNYI YVLNEEDLQK VAEYKTGPVL EHPDCFCPCQD CSSKANLSGG VWKDNINMAL VVDTYDDQL ISCGSVNRGT CQRHVFPNH TADIQSEVHC IFSPQIEEPS QCPDCVVSAL GAKVLSSVKD RFINFFVGNT INSSYFPDHP LHSISVRLK ETKDGFMTLT DQSYIDVLPE FRDSYPIKYV HAFESNNFIY FLTVQRETLA AQTFFHTRIIR FCSINSGLHS YMEMPLCIL TEKRKRSTK KEVFNILQAA YVSKPGAQLA RQIGASLNDL ILFGVFAQSK PDSAEPMDRS AMCAFPIKYV NDFFNKIVNK NNVRCLQHFY GPNHEHCFNR TLLRNSSGCE ARRDEYRTEF TTALQRVDLF MGQFSEVLLT SISTFIKGD L TIANLGTSEG RFMQVVSRS GPSTPHVNFL LDSHPVSPV IVEHTLNQNG YTLVITGKKI TKIPLNGLGC RHFQSCSQCL SAPPFVQCGW CHDKCVRSEE CLSGTWTQQL CLPAIYKVFP NSAPLEGGTR LTICGWDFGF RRNNKFDLKK</p>

Product Details

TRVLLGNESC TLTLSESTMN TLKCTVGPAM NKHFNMSIII SNGHGTTQYS TFSYVDPVIT
SISPKYGPMA GGTLTTLTGN YLNSGNSRHI SIGGKTCTLK SVSNSILECY TPAQTISTEF
AVKCLKIDLAN RETSIFSIRE DPIVYIEHPT KSFISGGSTI TGVGKNLNSV SVPRMVINVH
EAGRNFVAC QHRNSEIIC CTTPSLQQLN LQLPLKTKAF FMLDGILSKY FDLIYVHNPV
FKPFKPVMI SMGNENVLEI KGNDIDPEAV KGEVLKVGNK SCENIHLHSE AVLCTVPNDL
LKLNSELNIE WKQAISSTVL GKVIVQPDQN FTGLIAGVVS ISTALLLLG FFLWLKCRKQ
IKDLGSELVR YDARVHTPHL DRLVSARSVS PTTEMVSNES VDYRATFPED QFPNSSQNGS
CRQVQYPLTD MSPILTSGDS DISSPLLQNT VHIDLSALNP ELVQAVQHVV IGPSSLIVHF
NEVIGRGHFG CVYHGTLLDN DGKKIHCAVK SLNRITDIGE VSQFLTEGII MKDFSHPNVL
SLLGICLRSE GSPLVLPYM KHGDLRNFIR NETHNPTVKD LIGFLQVAK GMKYLASKKF
VHRDLAARNC MLDEKFTVKV ADFGLARDMY DKEYYSVHNK TGAKLPVKWM ALESLQTQKF
TTKSDVWSFG VLLWELMTRG APPYPDVNTF DITVYLLQGR RLLQPEYCPD PLYEVMLKCW
HPKAEMRPSF SELVSRISAI FSTFIGEHYV HVNATYVNVK CVAPYPSLLS SEDNADDEVD
TRPASFWETS

Cross-Reactivity:	Human
Characteristics:	Antibody reactive against mammalian transfected lysate.

Target Details

Target:	c-MET (MET)
Alternative Name:	MET (MET Products)
Background:	Full Gene Name: met proto-oncogene (hepatocyte growth factor receptor) Synonyms: AUTS9,HGFR,RCCP2,c-Met
Gene ID:	4233
NCBI Accession:	NM_000245
Pathways:	RTK Signaling , Carbohydrate Homeostasis , Synaptic Membrane , Signaling of Hepatocyte Growth Factor Receptor

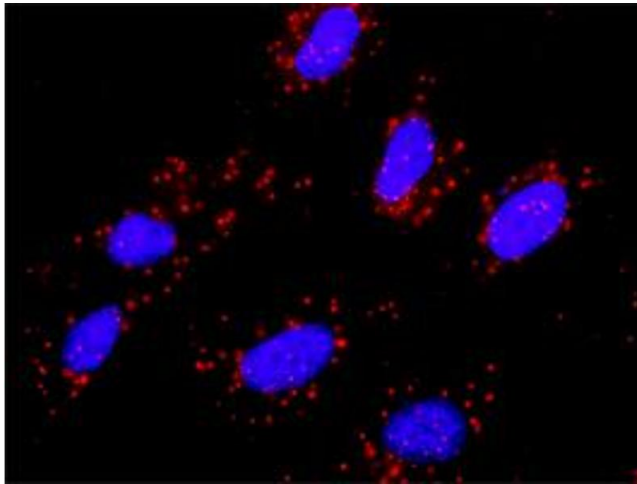
Application Details

Application Notes:	Optimal working dilution should be determined by the investigator.
Restrictions:	For Research Use only

Handling

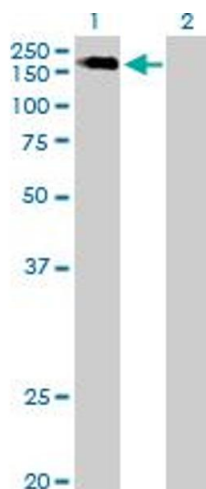
Buffer:	In 1x PBS, pH 7.4
Handling Advice:	Aliquot to avoid repeated freezing and thawing.
Storage:	-20 °C
Storage Comment:	Store at -20°C or lower. Aliquot to avoid repeated freezing and thawing.

Images



Proximity Ligation Assay

Image 1. Proximity Ligation Analysis of protein-protein interactions between CBL and MET. HeLa cells were stained with anti-CBL rabbit purified polyclonal 1:1200 and anti-MET mouse purified polyclonal antibody 1:50. Each red dot represents the detection of protein-protein interaction complex, and nuclei were counterstained with DAPI (blue).

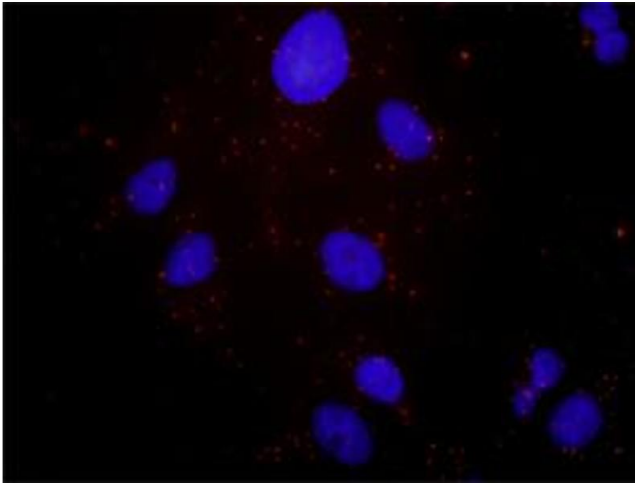


Western Blotting

Image 2. Western Blot analysis of MET expression in transfected 293T cell line by MET MaxPab polyclonal antibody.

Lane 1: MET transfected lysate(152.9 KDa).

Lane 2: Non-transfected lysate.



Proximity Ligation Assay

Image 3. Proximity Ligation Analysis of protein-protein interactions between HGF and MET. Mahlavu cells were stained with anti-HGF rabbit purified polyclonal 1:1200 and anti-MET mouse purified polyclonal antibody 1:50. Each red dot represents the detection of protein-protein interaction complex, and nuclei were counterstained with DAPI (blue).