

Datasheet for ABIN517902

anti-Mammaglobin A antibody (AA 1-93)[Go to Product page](#)**1** Image

Overview

Quantity:	50 µL
Target:	Mammaglobin A (SCGB2A2)
Binding Specificity:	AA 1-93
Reactivity:	Human
Host:	Mouse
Clonality:	Polyclonal
Conjugate:	This Mammaglobin A antibody is un-conjugated
Application:	Western Blotting (WB)

Product Details

Purpose:	Mouse polyclonal antibody raised against a full-length human SCGB2A2 protein.
Immunogen:	SCGB2A2 (AAI28403.1, 1 a.a. ~ 93 a.a) full-length human protein.
Sequence:	MKLLMVLMLA ALSQHCHYAGS GCPLLENNVIS KTINPQVSKT EYKELLQEFI DDNATTNAID ELKECFNLNQT DETLSNVEVF MQLIYDSSLC DLF
Cross-Reactivity:	Human
Characteristics:	Antibody reactive against mammalian transfected lysate.

Target Details

Target:	Mammaglobin A (SCGB2A2)
Alternative Name:	SCGB2A2 (SCGB2A2 Products)

Target Details

Background:	Full Gene Name: secretoglobin, family 2A, member 2 Synonyms: MGB1,MGC71974,UGB2
Gene ID:	4250
NCBI Accession:	NM_002411

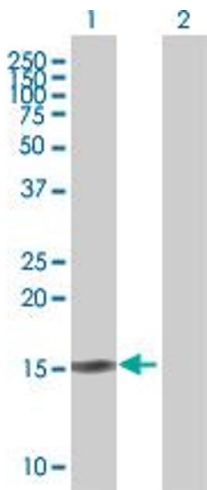
Application Details

Application Notes:	Optimal working dilution should be determined by the investigator.
Restrictions:	For Research Use only

Handling

Format:	Liquid
Buffer:	No additive
Preservative:	Without preservative
Handling Advice:	Aliquot to avoid repeated freezing and thawing.
Storage:	-20 °C
Storage Comment:	Store at -20°C or lower. Aliquot to avoid repeated freezing and thawing.

Images



Western Blotting

Image 1. Western Blot analysis of SCGB2A2 expression in transfected 293T cell line by SCGB2A2 MaxPab polyclonal antibody.

Lane 1: SCGB2A2 transfected lysate(10.23 KDa).

Lane 2: Non-transfected lysate.