



[Go to Product page](#)

Datasheet for ABIN517904  
**anti-KIT Ligand antibody (AA 1-245)**

2 Images

Overview

Quantity:	100 µg
Target:	KIT Ligand (KITLG)
Binding Specificity:	AA 1-245
Reactivity:	Human
Host:	Rabbit
Clonality:	Polyclonal
Conjugate:	This KIT Ligand antibody is un-conjugated
Application:	Western Blotting (WB), Proximity Ligation Assay (PLA)

Product Details

Purpose:	Rabbit polyclonal antibody raised against a full-length human KITLG protein.
Immunogen:	KITLG (NP_003985.2, 1 a.a. ~ 245 a.a) full-length human protein.
Sequence:	MKKTQTWILT CIYLQLLLLFN PLVKTEGICR NRVTNNVKDV TKLVANLPKD YMITLKYVPG MDVLP SHCWI SEMVVQLSDS LTDLLDKFSN ISEGLSNYSI IDKLVNIVDD LVEC VKENSS KDLKKSFKSP EPRLFTPEEF FRIFNRSIDA FKDFVVASET SDCVVSSTLS PEKGKAKNPP GDSSLHWAAM ALPALFSLII GFAFGALYWK KRQPSLTRAV ENIQINEEDN EISMLQEKER EFQEV
Cross-Reactivity:	Human
Characteristics:	Antibody reactive against mammalian transfected lysate.

Target Details

Target:	KIT Ligand (KITLG)
---------	--------------------

## Target Details

Alternative Name:	KITLG ( <a href="#">KITLG Products</a> )
Background:	Full Gene Name: KIT ligand Synonyms: DKFZp686F2250,KL-1,Kitl,MGF,SCF,SF,SHEP7
Gene ID:	4254
NCBI Accession:	<a href="#">NM_003994</a>
Pathways:	<a href="#">RTK Signaling</a> , <a href="#">Fc-epsilon Receptor Signaling Pathway</a> , <a href="#">EGFR Signaling Pathway</a> , <a href="#">Neurotrophin Signaling Pathway</a>

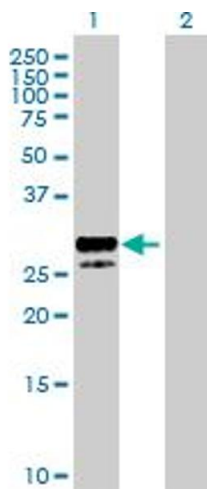
## Application Details

Application Notes:	Optimal working dilution should be determined by the investigator.
Restrictions:	For Research Use only

## Handling

Buffer:	In 1x PBS, pH 7.4
Handling Advice:	Aliquot to avoid repeated freezing and thawing.
Storage:	-20 °C
Storage Comment:	Store at -20°C or lower. Aliquot to avoid repeated freezing and thawing.

## Images

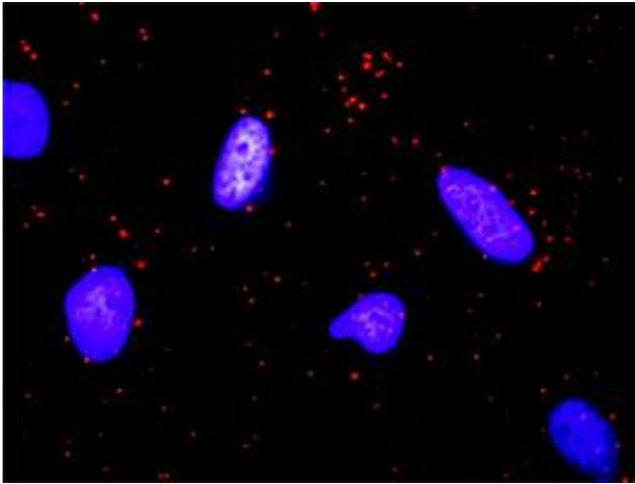


### Western Blotting

**Image 1.** Western Blot analysis of KITLG expression in transfected 293T cell line by KITLG MaxPab polyclonal antibody.

Lane 1: KITLG transfected lysate(27.90 kDa).

Lane 2: Non-transfected lysate.



### Proximity Ligation Assay

**Image 2.** Proximity Ligation Analysis of protein-protein interactions between KITLG and FLT3LG. HeLa cells were stained with anti-KITLG rabbit purified polyclonal 1:1200 and anti-FLT3LG mouse monoclonal antibody 1:50. Each red dot represents the detection of protein-protein interaction complex, and nuclei were counterstained with DAPI (blue).