



[Go to Product page](#)

Datasheet for ABIN517947
anti-MLLT6 antibody (AA 1-325)

1 Image

Overview

Quantity:	50 µg
Target:	MLLT6
Binding Specificity:	AA 1-325
Reactivity:	Human
Host:	Mouse
Clonality:	Polyclonal
Conjugate:	This MLLT6 antibody is un-conjugated
Application:	Western Blotting (WB)

Product Details

Purpose:	Mouse polyclonal antibody raised against a full-length human MLLT6 protein.
Immunogen:	MLLT6 (AAH64612.1, 1 a.a. ~ 325 a.a) full-length human protein.
Sequence:	MKEMVGGCCV CSDERGWAEN PLVYCDGHAC SVAVHQACYG IVQVPTGPWF CRKCESQERA ARVRCELCPH KDGALKRTDN GGWAHVVCAL YIPEVQFANV LTMEPIVLQY VPHDRFNKTC YICEEQGRES KAASGACMTC NRHGCRQAFH VTCAQMAGLL CEEVLEVDN VKYCGYCKYH FSKMKTSRHS SGGGGGGAGG GGGSMGGGGS GFISGRRSRS ASPSTQKEKH PTHHERGQKK SRKDKERLKQ KHKRPESPP SILTPPVVPT ADKPRRGHQS PTNHGIGSLG CCLPDTPICL CPEGLSPGLL SAESGGRHSG LLSKF
Cross-Reactivity:	Human
Characteristics:	Antibody reactive against mammalian transfected lysate.

Target Details

Target:	MLLT6
Alternative Name:	MLLT6 (MLLT6 Products)
Background:	Full Gene Name: myeloid/lymphoid or mixed-lineage leukemia (trithorax homolog, Drosophila), translocated to, 6 Synonyms: AF17,FLJ23480
Gene ID:	4302

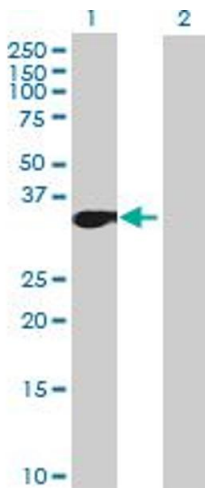
Application Details

Application Notes:	Optimal working dilution should be determined by the investigator.
Restrictions:	For Research Use only

Handling

Buffer:	In 1x PBS, pH 7.4
Handling Advice:	Aliquot to avoid repeated freezing and thawing.
Storage:	-20 °C
Storage Comment:	Store at -20°C or lower. Aliquot to avoid repeated freezing and thawing.

Images



Western Blotting

Image 1. Western Blot analysis of MLLT6 expression in transfected 293T cell line by MLLT6 MaxPab polyclonal antibody.

Lane 1: MLLT6 transfected lysate(35.75 KDa).

Lane 2: Non-transfected lysate.