



Datasheet for ABIN517948
anti-MLLT6 antibody (AA 1-462)



[Go to Product page](#)

3 Images

Overview

Quantity:	100 µg
Target:	MLLT6
Binding Specificity:	AA 1-462
Reactivity:	Human
Host:	Mouse
Clonality:	Monoclonal
Conjugate:	This MLLT6 antibody is un-conjugated
Application:	Western Blotting (WB), ELISA, Immunofluorescence (IF)

Product Details

Purpose:	Mouse monoclonal antibody raised against a full length recombinant MLLT6.
Immunogen:	MLLT6 (AAH07237, 1 a.a. ~ 462 a.a) full-length recombinant protein with GST tag. MW of the GST tag alone is 26 KDa.
Sequence:	MGAVNPLLSQ AESSHTEPDL EDCSFRRCRG T SPQESLSSMS PISSLPALFD QTASAPCGGG QLDPAAPGTT NMEQLLEKQG DGEAGVNIVE MLKALHALQK ENQRLQEQIL SLTAKKERLQ ILNVQLSVPF PALPAALPAA NGPVPGPYGL PPQAGSSDSL STSKSPPGKS SLGLDNSLST SSEDPHSGCP SRSSSSLSFH STPPPLPLLQ QSPATLPLAL PGAPAPLPPQ PQNGLGRAPG AAGLGAMPMA EGLLGGLAGS GGLPLNLLG GLNGAAAPNP ASLSQAGGAP TLQLPGCLNS LTEQQRHLLQ QQEQLLQQLQ QLLASPQLTP EHQTVVYQMI QQIQKRELQ RLQMAGGSQ PMASLLAGSS TPLLSAGTPG LLPTASAPPL LPAGALVAPS LGNNTSLMAA AAAAAAVAAA GGPPVLTAQT NPFLSLSGAE GSGGGPKGGT ADKGASANQE KG

Product Details

Clone:	1B2
Isotype:	IgG1
Cross-Reactivity:	Human
Characteristics:	Antibody Reactive Against Recombinant Protein.

Target Details

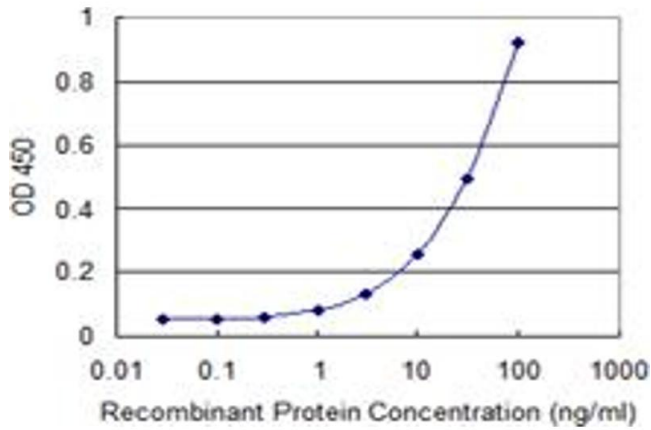
Target:	MLLT6
Alternative Name:	MLLT6 (MLLT6 Products)
Background:	Full Gene Name: myeloid/lymphoid or mixed-lineage leukemia (trithorax homolog, Drosophila), translocated to, 6 Synonyms: AF17,FLJ23480
Gene ID:	4302

Application Details

Application Notes:	Optimal working dilution should be determined by the investigator.
Restrictions:	For Research Use only

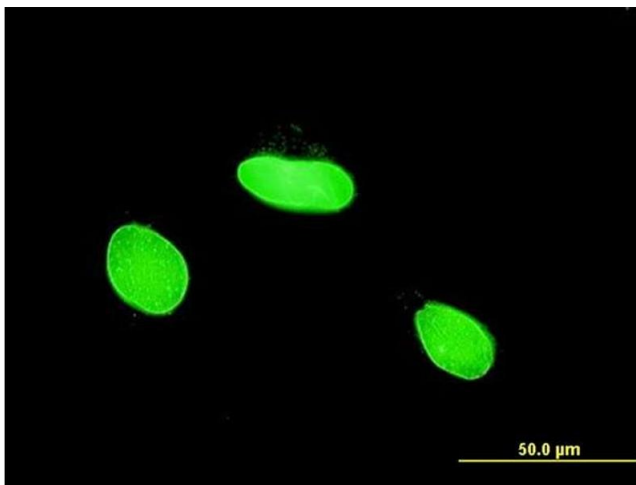
Handling

Buffer:	In 1x PBS, pH 7.4
Handling Advice:	Aliquot to avoid repeated freezing and thawing.
Storage:	-20 °C
Storage Comment:	Store at -20°C or lower. Aliquot to avoid repeated freezing and thawing.



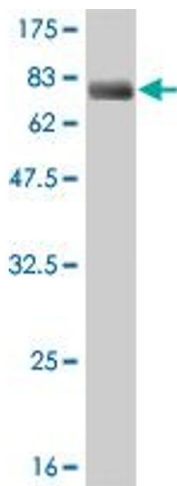
ELISA

Image 1. Detection limit for recombinant GST tagged MLLT6 is 0.3 ng/ml as a capture antibody.



Immunofluorescence

Image 2. Immunofluorescence of monoclonal antibody to MLLT6 on HeLa cell. [antibody concentration 10 ug/ml]



Western Blotting

Image 3. Western Blot detection against Immunogen (76.56 KDa) .