

Datasheet for ABIN517953  
**anti-MMP1 antibody (AA 1-469)**



[Go to Product page](#)

2 Images

1 Publication

## Overview

Quantity:	50 µg
Target:	MMP1
Binding Specificity:	AA 1-469
Reactivity:	Human
Host:	Mouse
Clonality:	Polyclonal
Conjugate:	This MMP1 antibody is un-conjugated
Application:	Western Blotting (WB)

## Product Details

Purpose:	Mouse polyclonal antibody raised against a full-length human MMP1 protein.
Immunogen:	MMP1 (NP_002412.1, 1 a.a. ~ 469 a.a) full-length human protein.
Sequence:	MHSFPPLLLL LFWGVVSHSF PATLETQEQD VDLVQKYLEK YYNLKNDGRQ VEKRRNSGPV VEKLRKQMQEF FGLKVTGKPD AETLKVMKQP RCGVPDVAQF VLTEGNPRWE QTHLTYRIEN YTPDLPRADV DHAIEKAFQL WSNVTPLTFT KVSEGGADIM ISFVRGDHRD NSPFDGPGGN LAHAFQPGPG IGGDAHFDDED ERWTNNFREY NLHRVAAHEL GHSLGLSHST DIGALMYPST TFSGDVQLAQ DDIDGIQAIY GRSQNPVQPI GPQTPKACDS KLTFDAITTI RGEVMFFKDR FYMRTNPFYP EVELNFISVF WPQLPNGLEA AYEFADRDEV RFFKGNKYWA VQGQNVLHGY PKDIYSSFGF PRTVKHIDAA LSEENTGKTY FVANKYWRY DEYKRSMDFG YPKMIAHDFP GIGHKVDVAVF MKDGGFFYFFH GTRQYKFDPK TKRILTLQKA NSWFNCRKN
Cross-Reactivity:	Human

## Product Details

---

Characteristics: Antibody reactive against mammalian transfected lysate.

## Target Details

---

Target: MMP1

Alternative Name: MMP1 ([MMP1 Products](#))

Background: Full Gene Name: matrix metalloproteinase 1 (interstitial collagenase)  
Synonyms: CLG,CLGN

Gene ID: 4312

NCBI Accession: [NM\\_002421](#)

## Application Details

---

Application Notes: Optimal working dilution should be determined by the investigator.

Restrictions: For Research Use only

## Handling

---

Buffer: In 1x PBS, pH 7.4

Handling Advice: Aliquot to avoid repeated freezing and thawing.

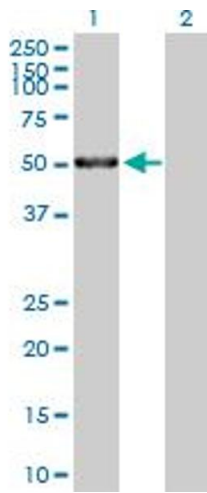
Storage: -20 °C

Storage Comment: Store at -20°C or lower. Aliquot to avoid repeated freezing and thawing.

## Publications

---

Product cited in: Teng, Wang, Hood, Conrads, Hamilton, Maxwell, Darcy, Conrads: "Identification of candidate circulating cisplatin-resistant biomarkers from epithelial ovarian carcinoma cell secretomes." in: **British journal of cancer**, Vol. 110, Issue 1, pp. 123-32, (2014) ([PubMed](#)).

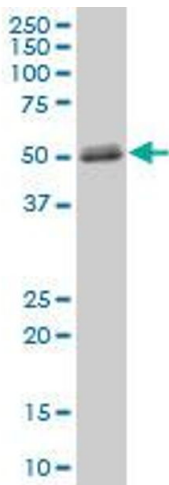


#### Western Blotting

**Image 1.** Western Blot analysis of MMP1 expression in transfected 293T cell line by MMP1 MaxPab polyclonal antibody.

Lane 1: MMP1 transfected lysate(51.59 kDa).

Lane 2: Non-transfected lysate.



#### Western Blotting

**Image 2.** MMP1 MaxPab polyclonal antibody. Western Blot analysis of MMP1 expression in human pancreas.