

Datasheet for ABIN517961  
**anti-MMP7 antibody (AA 1-267)**



[Go to Product page](#)

2 Images

## Overview

Quantity:	100 µg
Target:	MMP7
Binding Specificity:	AA 1-267
Reactivity:	Human
Host:	Rabbit
Clonality:	Polyclonal
Conjugate:	This MMP7 antibody is un-conjugated
Application:	Western Blotting (WB), Proximity Ligation Assay (PLA)

## Product Details

Purpose:	Rabbit polyclonal antibody raised against a full-length human MMP7 protein.
Immunogen:	MMP7 (NP_002414.1, 1 a.a. ~ 267 a.a) full-length human protein.
Sequence:	MRLTVLCAVC LLPGSLALPL PQEAGGMSEL QWEQAQDYLK RFYLYDSETK NANSLEAKLK EMQKFFGLPI TGMLNSRVIE IMQKPRCGVP DVAEYSLFPN SPKWTSKVVT YRIVSYTRDL PHITVDRLVS KALNMWGKEI PLHFRKVVWG TADIMIGFAR GAHGDSYPFD GPGNTLAHAF APGTGLGGDA HFEDERWTD GSSLGINFLY AATHELGHSL GMGHSSDPNA VMYPTYGNPD PQNFKLSQDD IKGIQKLYGK RSNSRKK
Cross-Reactivity:	Human
Characteristics:	Antibody reactive against mammalian transfected lysate.

## Target Details

Target:	MMP7
Alternative Name:	MMP7 ( <a href="#">MMP7 Products</a> )
Background:	Full Gene Name: matrix metalloproteinase 7 (matrilysin, uterine) Synonyms: MMP-7,MPSL1,PUMP-1
Gene ID:	4316
NCBI Accession:	<a href="#">NM_002423</a>
Pathways:	<a href="#">Production of Molecular Mediator of Immune Response</a>

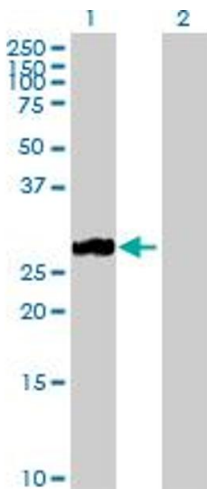
## Application Details

Application Notes:	Optimal working dilution should be determined by the investigator.
Restrictions:	For Research Use only

## Handling

Buffer:	In 1x PBS, pH 7.4
Handling Advice:	Aliquot to avoid repeated freezing and thawing.
Storage:	-20 °C
Storage Comment:	Store at -20°C or lower. Aliquot to avoid repeated freezing and thawing.

## Images

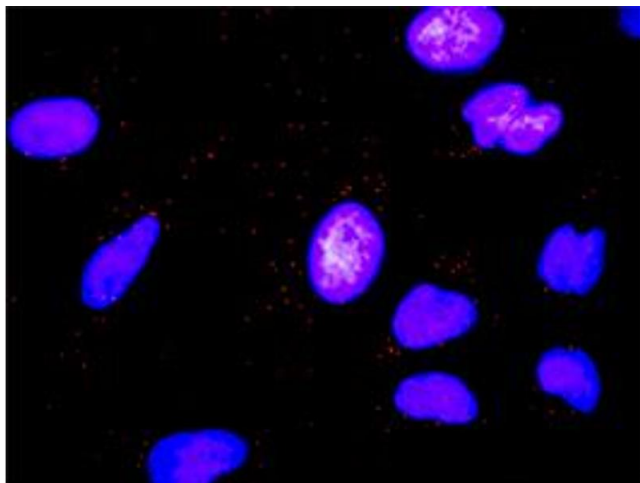


### Western Blotting

**Image 1.** Western Blot analysis of MMP7 expression in transfected 293T cell line by MMP7 MaxPab polyclonal antibody.

Lane 1: MMP7 transfected lysate(29.70 KDa).

Lane 2: Non-transfected lysate.



#### Proximity Ligation Assay

**Image 2.** Proximity Ligation Analysis of protein-protein interactions between MMP7 and FASLG. HeLa cells were stained with anti-MMP7 rabbit purified polyclonal 1:1200 and anti-FASLG mouse monoclonal antibody 1:50. Each red dot represents the detection of protein-protein interaction complex, and nuclei were counterstained with DAPI (blue).