



[Go to Product page](#)

Datasheet for ABIN518015
anti-CITED1 antibody (AA 94-193)

6 Images

Overview

Quantity:	100 µg
Target:	CITED1
Binding Specificity:	AA 94-193
Reactivity:	Human
Host:	Mouse
Clonality:	Monoclonal
Conjugate:	This CITED1 antibody is un-conjugated
Application:	Western Blotting (WB), ELISA

Product Details

Purpose:	Mouse monoclonal antibody raised against a partial recombinant CITED1.
Immunogen:	CITED1 (NP_004134, 94 a.a. ~ 193 a.a) partial recombinant protein with GST tag. MW of the GST tag alone is 26 KDa.
Sequence:	SMQLQKLNSQ YQGMAAATPG QPGEAGPLQN WDFGAQAGGA ESLSPSAGAQ SPAIIDSDPV DEEVLMSLVV ELGLDRANEL PELWLGQNEF DFTADFPSSC
Clone:	6C1
Isotype:	IgG2a
Cross-Reactivity:	Human, Rat
Characteristics:	Antibody Reactive Against Recombinant Protein.

Target Details

Target:	CITED1
Alternative Name:	CITED1 (CITED1 Products)
Background:	Full Gene Name: Cbp/p300-interacting transactivator, with Glu/Asp-rich carboxy-terminal domain, 1 Synonyms: MSG1
Gene ID:	4435
NCBI Accession:	NM_004143

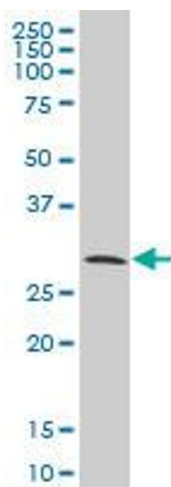
Application Details

Application Notes:	Optimal working dilution should be determined by the investigator.
Restrictions:	For Research Use only

Handling

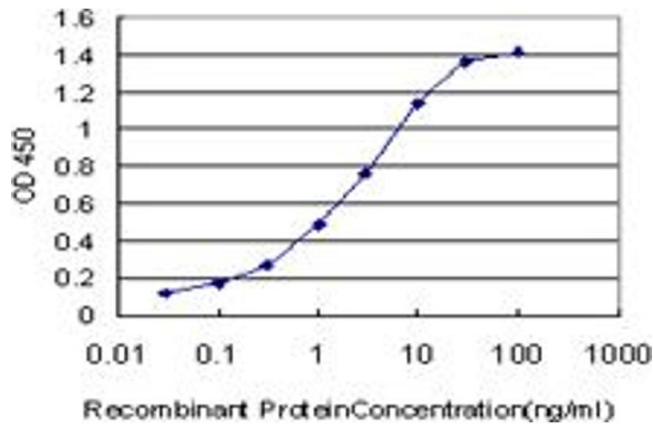
Buffer:	In 1x PBS, pH 7.4
Handling Advice:	Aliquot to avoid repeated freezing and thawing.
Storage:	-20 °C
Storage Comment:	Store at -20°C or lower. Aliquot to avoid repeated freezing and thawing.

Images



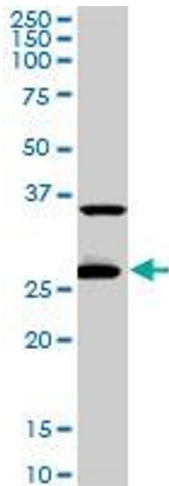
Western Blotting

Image 1. CITED1 monoclonal antibody (M02), clone 6C1
Western Blot analysis of CITED1 expression in A-431



ELISA

Image 2. Detection limit for recombinant GST tagged CITED1 is approximately 0.03ng/ml as a capture antibody.



Western Blotting

Image 3. CITED1 monoclonal antibody (M02), clone 6C1. Western Blot analysis of CITED1 expression in PC-12

Please check the [product details page](#) for more images. Overall 6 images are available for ABIN518015.