



[Go to Product page](#)

Datasheet for ABIN518023
anti-MSH2 antibody (AA 835-934)

4 Images

Overview

Quantity:	100 µg
Target:	MSH2
Binding Specificity:	AA 835-934
Reactivity:	Human
Host:	Mouse
Clonality:	Monoclonal
Conjugate:	This MSH2 antibody is un-conjugated
Application:	Western Blotting (WB), ELISA, Proximity Ligation Assay (PLA)

Product Details

Purpose:	Mouse monoclonal antibody raised against a partial recombinant MSH2.
Immunogen:	MSH2 (AAH21566, 835 a.a. ~ 934 a.a) partial recombinant protein with GST tag. MW of the GST tag alone is 26 KDa.
Sequence:	NFPKHVIECA KQKALELEEF QYIGESQGYD IMEPAAKKCY LEREQGEKII QEFLSKVKQM PFTSEMSEENI TIKLKQLKAE VIAKNNSFVN EIISRIKVTT
Clone:	4B2
Isotype:	IgG2a
Cross-Reactivity:	Human
Characteristics:	Antibody Reactive Against Recombinant Protein.

Target Details

Target:	MSH2
Alternative Name:	MSH2 (MSH2 Products)
Background:	Full Gene Name: mutS homolog 2, colon cancer, nonpolyposis type 1 (E. coli) Synonyms: COCA1,FCC1,HNPCC,HNPCC1,LCFS2
Gene ID:	4436
Pathways:	DNA Damage Repair , Production of Molecular Mediator of Immune Response

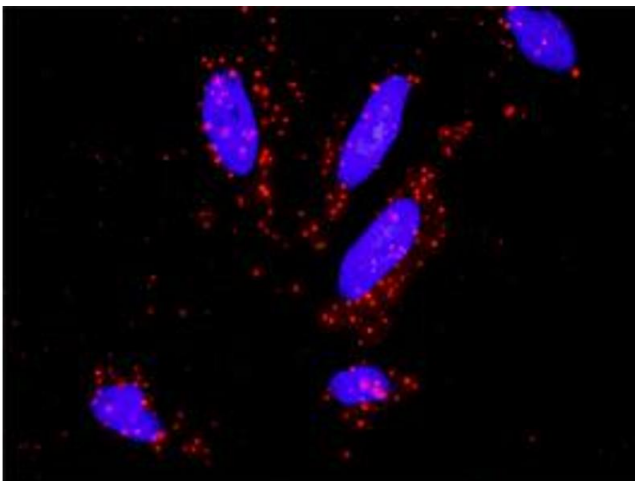
Application Details

Application Notes:	Optimal working dilution should be determined by the investigator.
Restrictions:	For Research Use only

Handling

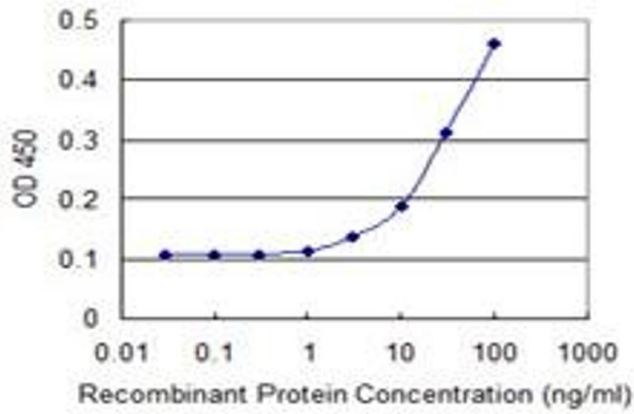
Buffer:	In 1x PBS, pH 7.4
Handling Advice:	Aliquot to avoid repeated freezing and thawing.
Storage:	-20 °C
Storage Comment:	Store at -20°C or lower. Aliquot to avoid repeated freezing and thawing.

Images



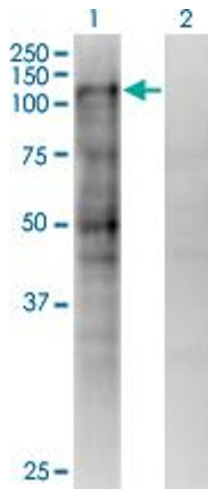
Proximity Ligation Assay

Image 1. Proximity Ligation Analysis of protein-protein interactions between MAX and MSH2. HeLa cells were stained with anti-MAX rabbit purified polyclonal 1:1200 and anti-MSH2 mouse monoclonal antibody 1:50. Each red dot represents the detection of protein-protein interaction complex, and nuclei were counterstained with DAPI (blue).



ELISA

Image 2. Detection limit for recombinant GST tagged MSH2 is 1 ng/ml as a capture antibody.



Western Blotting

Image 3. Western Blot analysis of MSH2 expression in transfected 293T cell line by MSH2 monoclonal antibody (M02), clone 4B2.

Lane 1: MSH2 transfected lysate (Predicted MW: 104.7 KDa).

Lane 2: Non-transfected lysate.

Please check the [product details page](#) for more images. Overall 4 images are available for ABIN518023.