



[Go to Product page](#)

Datasheet for ABIN518032  
**anti-MSI1 antibody (AA 1-87)**

5 Images

1 Publication

### Overview

Quantity:	100 µg
Target:	MSI1
Binding Specificity:	AA 1-87
Reactivity:	Human
Host:	Mouse
Clonality:	Monoclonal
Conjugate:	This MSI1 antibody is un-conjugated
Application:	Western Blotting (WB), ELISA, Immunofluorescence (IF), Immunohistochemistry (Paraffin-embedded Sections) (IHC (p))

### Product Details

Purpose:	Mouse monoclonal antibody raised against a full length recombinant MSI1.
Immunogen:	MSI1 (NP_002433, 1 a.a. ~ 87 a.a) full length recombinant protein with GST tag. MW of the GST tag alone is 26 KDa.
Sequence:	METDAPQPGL ASPDSPHDPC KMFIGGLSWQ TTQEGLREYF GQFGE VKECL VMRDPLTKRS RGFGFVTFMD QAGVDKVLAQ SRHELDS
Clone:	3F2
Isotype:	IgG2a
Cross-Reactivity:	Human
Characteristics:	Antibody Reactive Against Recombinant Protein.

## Target Details

---

Target:	MSI1
Alternative Name:	MSI1 ( <a href="#">MSI1 Products</a> )
Background:	Full Gene Name: musashi homolog 1 (Drosophila) Synonyms:
Gene ID:	4440
NCBI Accession:	<a href="#">NM_002442</a>
Pathways:	<a href="#">Stem Cell Maintenance</a>

## Application Details

---

Application Notes:	Optimal working dilution should be determined by the investigator.
Restrictions:	For Research Use only

## Handling

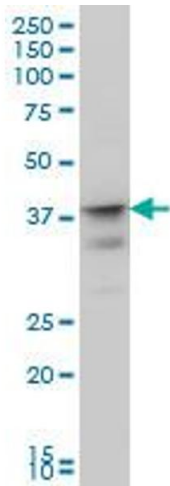
---

Buffer:	In 1x PBS, pH 7.4
Handling Advice:	Aliquot to avoid repeated freezing and thawing.
Storage:	-20 °C
Storage Comment:	Store at -20°C or lower. Aliquot to avoid repeated freezing and thawing.

## Publications

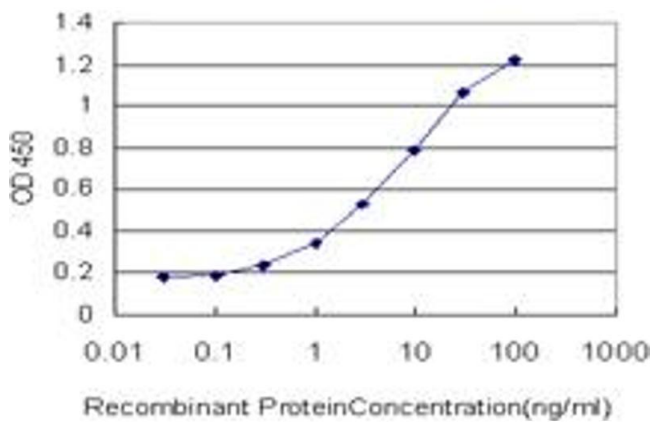
---

Product cited in:	Lee, Ling, Yu, Hung, Kao, Huang, Higuchi: "Drug-resistant colon cancer cells produce high carcinoembryonic antigen and might not be cancer-initiating cells." in: <b>Drug design, development and therapy</b> , Vol. 7, pp. 491-502, (2013) ( <a href="#">PubMed</a> ).
-------------------	---



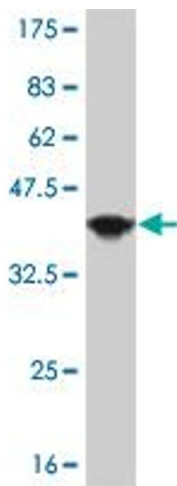
### Western Blotting

**Image 1.** MSI1 monoclonal antibody (M04), clone 3F2 Western Blot analysis of MSI1 expression in IMR-32 .



### ELISA

**Image 2.** Detection limit for recombinant GST tagged MSI1 is approximately 0.3ng/ml as a capture antibody.



### Western Blotting

**Image 3.** Western Blot detection against Immunogen (35.57 kDa) .

Please check the [product details page](#) for more images. Overall 5 images are available for ABIN518032.