



[Go to Product page](#)

Datasheet for ABIN518043  
**anti-MSRA antibody (AA 1-235)**

2 Images

Overview

Quantity:	100 µg
Target:	MSRA
Binding Specificity:	AA 1-235
Reactivity:	Human
Host:	Rabbit
Clonality:	Polyclonal
Conjugate:	This MSRA antibody is un-conjugated
Application:	Western Blotting (WB)

Product Details

Purpose:	Rabbit polyclonal antibody raised against a full-length human MSRA protein.
Immunogen:	MSRA (NP_036463.1, 1 a.a. ~ 235 a.a) full-length human protein.
Sequence:	MLSATTRACQ LLLLHSLFPV PRMGNSASNI VSPQEALPGR KEQTPVAAKH HVNGNRTVEP FPEGTQMAVF GMGCFWGAER KFWVLKGVYS TQVGFAGGYT SNPTYKEVCS EKTGHAEVVR VVYQPEHMSF EELLKVFWEN HDPTQGMRQG NDHGTQYRSA IYPTSAKQME AALSSKENYQ KVLSEHGFGP ITTDIREGQT FYAEDYHQQ YLSKNPNNGYC GLGGTGVSCP VGIKK
Cross-Reactivity:	Human, Mouse
Characteristics:	Antibody reactive against mammalian transfected lysate.

Target Details

Target:	MSRA
---------	------

## Target Details

Alternative Name:	MSRA ( <a href="#">MSRA Products</a> )
Background:	Full Gene Name: methionine sulfoxide reductase A Synonyms:
Gene ID:	4482
NCBI Accession:	<a href="#">NM_012331</a>

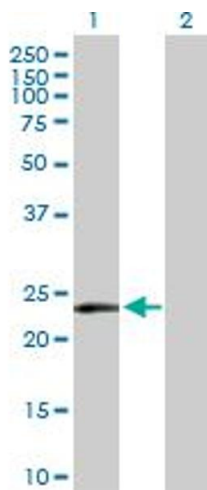
## Application Details

Application Notes:	Optimal working dilution should be determined by the investigator.
Restrictions:	For Research Use only

## Handling

Buffer:	In 1x PBS, pH 7.4
Handling Advice:	Aliquot to avoid repeated freezing and thawing.
Storage:	-20 °C
Storage Comment:	Store at -20°C or lower. Aliquot to avoid repeated freezing and thawing.

## Images

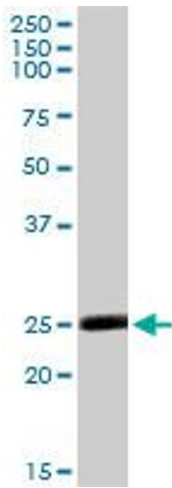


### Western Blotting

**Image 1.** Western Blot analysis of MSRA expression in transfected 293T cell line by MSRA MaxPab polyclonal antibody.

Lane 1: MSRA transfected lysate(26.10 KDa).

Lane 2: Non-transfected lysate.



### Western Blotting

**Image 2.** MSRA MaxPab rabbit polyclonal antibody. Western Blot analysis of MSRA expression in mouse kidney.