



[Go to Product page](#)

Datasheet for ABIN518065  
**anti-MTCP1 antibody (AA 1-68)**

1 Image

Overview

Quantity:	50 µg
Target:	MTCP1
Binding Specificity:	AA 1-68
Reactivity:	Human
Host:	Mouse
Clonality:	Polyclonal
Conjugate:	This MTCP1 antibody is un-conjugated
Application:	Western Blotting (WB)

Product Details

Purpose:	Mouse polyclonal antibody raised against a full-length human MTCP1 protein.
Immunogen:	MTCP1 (AAH02600, 1 a.a. ~ 68 a.a) full-length human protein.
Sequence:	MPQKDPCQKQ ACEIQKCLQA NSYMESKCQA VIQELRKCCA QYPKGRSVVC SGFEKEEEEN LTRKSASK
Cross-Reactivity:	Human
Characteristics:	Antibody reactive against mammalian transfected lysate.

Target Details

Target:	MTCP1
Alternative Name:	MTCP1 ( <a href="#">MTCP1 Products</a> )

## Target Details

Background: Full Gene Name: mature T-cell proliferation 1  
Synonyms: C6.1B,P13MTCP1

Gene ID: 4515

## Application Details

Application Notes: Optimal working dilution should be determined by the investigator.

Restrictions: For Research Use only

## Handling

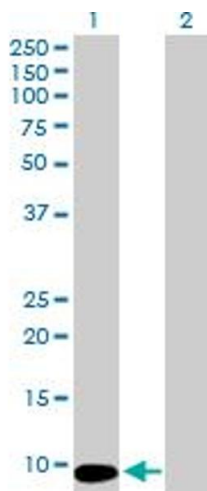
Buffer: In 1x PBS, pH 7.4

Handling Advice: Aliquot to avoid repeated freezing and thawing.

Storage: -20 °C

Storage Comment: Store at -20°C or lower. Aliquot to avoid repeated freezing and thawing.

## Images



### Western Blotting

**Image 1.** Western Blot analysis of MTCP1 expression in transfected 293T cell line by MTCP1 MaxPab polyclonal antibody.

Lane 1: MTCP1 transfected lysate(7.59 kDa).

Lane 2: Non-transfected lysate.