



[Go to Product page](#)

Datasheet for ABIN518112
anti-MX2 antibody (AA 1-715)

2 Images

Overview

Quantity:	50 µg
Target:	MX2
Binding Specificity:	AA 1-715
Reactivity:	Human
Host:	Mouse
Clonality:	Polyclonal
Conjugate:	This MX2 antibody is un-conjugated
Application:	Western Blotting (WB), Immunofluorescence (IF)

Product Details

Purpose:	Mouse polyclonal antibody raised against a full-length human MX2 protein.
Immunogen:	MX2 (AAH35293, 1 a.a. ~ 715 a.a) full-length human protein.
Sequence:	MSKAHKPWPY RRRSQFSSRK YLKKEMNSFQ QQPPFPGTVP PQMMFPPNWQ GAEKDAAFLL KDFNFLTINN QPPPGNRSQP RAMGPENNLV SQYEQKVRPC IDLIDSLRAL GVEQDLALPA IAVIGDQSSG KSSVLEALSG VALPRGSGIV TRCPLVLKLL KQPCEAWAGR ISYRNTELEL QDPGQVEKEI HKAQNVNMGAG GRGISHHELIS LEITSPEVVD LTIIDLPGIT RVAVDNQPRD IGLQIKALIK KYIQRQQTIN LVVVPCNVDI ATTEALSMAGH EVDPEGDRTI GILTKPDLMD RGTEKSVMMNV VRNLTYPLKK GYMIVKCRGQ QEITNRLSLA EATKKEITFF QTHPYFRVLL EEGSATVPRL AERLTTELIM HIQKSLPLLE GQIREHQKA TEELRRCGAD IPSQEADKMF FLIEKIKMFN QDIEKLVEGE EVVRENTRL YNKIREDFKN WVGILATNTQ KVKNIIEEV EKYEKQYRGK ELLGFVNYKT FEIVHQYIQ QLVEPALSML QKAMEIIQA FINVAKKHFG EFFNLNQTQVQ STIEDIKVKH TAKAENMIQL QFRMEQMVFC QDQIYSVVLK KVREEIFNPL

Product Details

GTPSQNMKLN SHFPSNESSV SSFTEIGIHL NAYFLETSKR LANQIPFIQ YFMLRENGDS
LQKAMMQILQ EKNRYSWLLQ EQSETATKRR ILKERIYRLT QARHALCQFS SKEIH

Cross-Reactivity: Human

Characteristics: Antibody reactive against mammalian transfected lysate.

Target Details

Target: MX2

Alternative Name: MX2 ([MX2 Products](#))

Background: Full Gene Name: myxovirus (influenza virus) resistance 2 (mouse)
Synonyms: MXB

Gene ID: 4600

Application Details

Application Notes: Optimal working dilution should be determined by the investigator.

Restrictions: For Research Use only

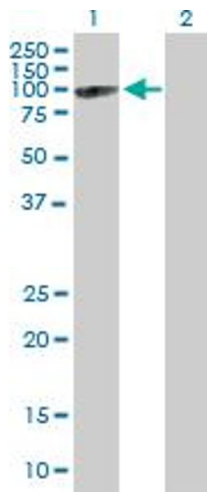
Handling

Buffer: In 1x PBS, pH 7.4

Handling Advice: Aliquot to avoid repeated freezing and thawing.

Storage: -20 °C

Storage Comment: Store at -20°C or lower. Aliquot to avoid repeated freezing and thawing.

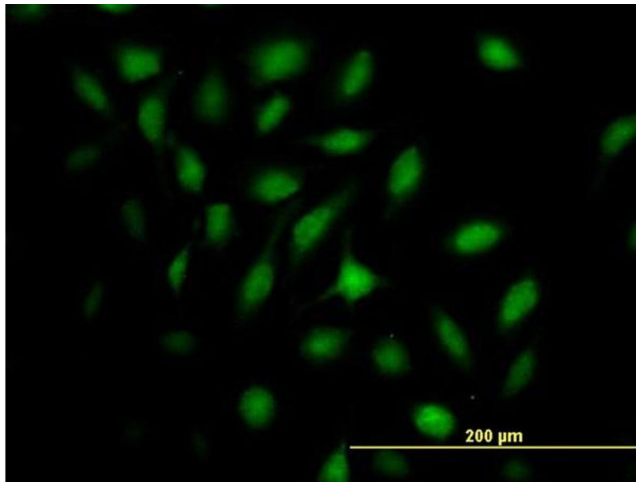


Western Blotting

Image 1. Western Blot analysis of MX2 expression in transfected 293T cell line by MX2 MaxPab polyclonal antibody.

Lane 1: MX2 transfected lysate(79.75 KDa).

Lane 2: Non-transfected lysate.



Immunofluorescence

Image 2. Immunofluorescence of purified MaxPab antibody to MX2 on HeLa cell. [antibody concentration 10 ug/ml]