

Datasheet for ABIN518150

anti-MYL3/CMLC1 antibody (AA 1-195)[Go to Product page](#)**1** Image

Overview

Quantity:	50 µg
Target:	MYL3/CMLC1 (MYL3)
Binding Specificity:	AA 1-195
Reactivity:	Human
Host:	Mouse
Clonality:	Polyclonal
Conjugate:	This MYL3/CMLC1 antibody is un-conjugated
Application:	Western Blotting (WB)

Product Details

Purpose:	Mouse polyclonal antibody raised against a full-length human MYL3 protein.
Immunogen:	MYL3 (NP_000249.1, 1 a.a. ~ 195 a.a) full-length human protein.
Sequence:	MAPKKPEPKK DDAKAAPKAA PAPAPPPEPE RPKEVEFDAS KIKIEFTPEQ IEEFKEAFML FDRTPKCEMK ITYGQCGDVL RALGQNPTQA EVLRVLGKPR QEELNTKMMD FETFLPMLQH ISKNKDTGTY EDFVEGLRVF DKEGNGTVMG AELRHVLATL GERLTEDEVE KL MAGQEDSN GCINYEAFVK HIMSS
Cross-Reactivity:	Human
Characteristics:	Antibody reactive against mammalian transfected lysate.

Target Details

Target:	MYL3/CMLC1 (MYL3)
---------	-------------------

Target Details

Alternative Name:	MYL3 (MYL3 Products)
Background:	Full Gene Name: myosin, light chain 3, alkali, ventricular, skeletal, slow Synonyms: CMH8,MLC1SB,MLC1V,VLC1
Gene ID:	4634
NCBI Accession:	NM_000258

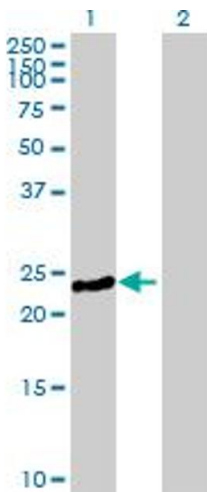
Application Details

Application Notes:	Optimal working dilution should be determined by the investigator.
Restrictions:	For Research Use only

Handling

Buffer:	In 1x PBS, pH 7.4
Handling Advice:	Aliquot to avoid repeated freezing and thawing.
Storage:	-20 °C
Storage Comment:	Store at -20°C or lower. Aliquot to avoid repeated freezing and thawing.

Images



Western Blotting

Image 1. Western Blot analysis of MYL3 expression in transfected 293T cell line by MYL3 MaxPab polyclonal antibody.

Lane 1: MYL3 transfected lysate(21.45 KDa).

Lane 2: Non-transfected lysate.