

Datasheet for ABIN518152

anti-MYL3/CMLC1 antibody (AA 1-195)**3** Images[Go to Product page](#)

Overview

Quantity:	100 µg
Target:	MYL3/CMLC1 (MYL3)
Binding Specificity:	AA 1-195
Reactivity:	Human
Host:	Mouse
Clonality:	Monoclonal
Conjugate:	This MYL3/CMLC1 antibody is un-conjugated
Application:	Western Blotting (WB), ELISA

Product Details

Purpose:	Mouse monoclonal antibody raised against a full-length recombinant MYL3.
Immunogen:	MYL3 (AAH09790, 1 a.a. ~ 195 a.a) full-length recombinant protein with GST tag. MW of the GST tag alone is 26 KDa.
Sequence:	MAPKKPEPKK DDAKAAPKAA PAPAPPPEPE RPKEVEFDAS KIKIEFTPEQ IEEFKEAFML FDRTPKCEMK ITYGQCGDVL RALGQNPTQA EVLRVLGKPR QEELNTKMMD FETFLPMLQH ISKNKDTGTY EDFVEGLRVF DKEGNGTVMG AELRHVLATL GERLTEDEVE KLMAQGEDSN GCINYEAFVK HIMSS
Clone:	4C2
Isotype:	IgG2a
Cross-Reactivity:	Human

Product Details

Characteristics: Antibody Reactive Against Recombinant Protein.

Target Details

Target:	MYL3/CMLC1 (MYL3)
Alternative Name:	MYL3 (MYL3 Products)
Background:	Full Gene Name: myosin, light chain 3, alkali, ventricular, skeletal, slow Synonyms: CMH8,MLC1SB,MLC1V,VLC1
Gene ID:	4634

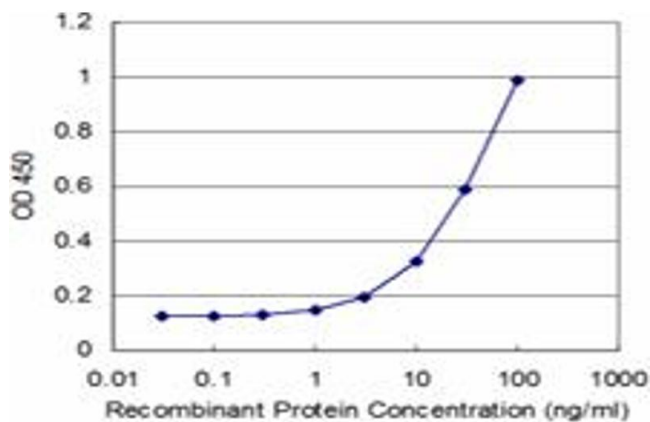
Application Details

Application Notes:	Optimal working dilution should be determined by the investigator.
Restrictions:	For Research Use only

Handling

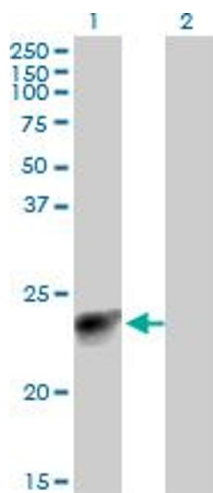
Buffer:	In 1x PBS, pH 7.4
Handling Advice:	Aliquot to avoid repeated freezing and thawing.
Storage:	-20 °C
Storage Comment:	Store at -20°C or lower. Aliquot to avoid repeated freezing and thawing.

Images



ELISA

Image 1. Detection limit for recombinant GST tagged MYL3 is approximately 3ng/ml as a capture antibody.

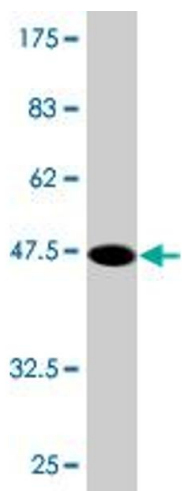


Western Blotting

Image 2. Western Blot analysis of MYL3 expression in transfected 293T cell line by MYL3 monoclonal antibody (M12), clone 4C2.

Lane 1: MYL3 transfected lysate(21.9 kDa).

Lane 2: Non-transfected lysate.



Western Blotting

Image 3. Western Blot detection against Immunogen (47.19 kDa) .