

Datasheet for ABIN518156
anti-MYL6 antibody (AA 1-100)

3 Images

[Go to Product page](#)

Overview

Quantity:	100 µg
Target:	MYL6
Binding Specificity:	AA 1-100
Reactivity:	Human
Host:	Mouse
Clonality:	Monoclonal
Conjugate:	This MYL6 antibody is un-conjugated
Application:	Western Blotting (WB), ELISA

Product Details

Purpose:	Mouse monoclonal antibody raised against a partial recombinant MYL6.
Immunogen:	MYL6 (NP_066299, 1 a.a. ~ 100 a.a) partial recombinant protein with GST tag. MW of the GST tag alone is 26 KDa.
Sequence:	MCDFTEDQTA EFKEAFQLFD RTGDGKILYS QCGDVMRALG QNPNTAEVLK VLGPNPKSDEM NVKVLDFEHF LPMLQTVAKN KDQGTIEDYV EGLRVFDKEG
Clone:	1D6
Isotype:	IgG2a
Cross-Reactivity:	Human, Mouse
Characteristics:	Antibody Reactive Against Recombinant Protein.

Target Details

Target:	MYL6
Alternative Name:	MYL6 (MYL6 Products)
Background:	Full Gene Name: myosin, light chain 6, alkali, smooth muscle and non-muscle Synonyms: ESMLC,LC17-GI,LC17-NM,LC17A,LC17B,MLC1SM,MLC3NM,MLC3SM
Gene ID:	4637
NCBI Accession:	NM_021019

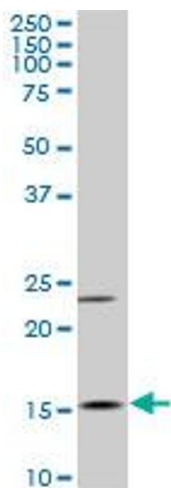
Application Details

Application Notes:	Optimal working dilution should be determined by the investigator.
Restrictions:	For Research Use only

Handling

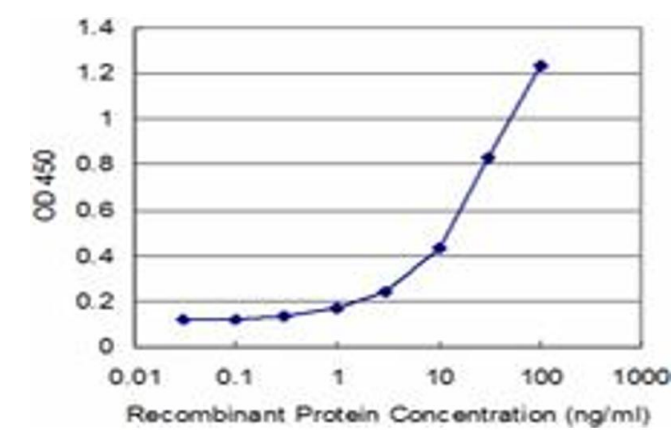
Buffer:	In 1x PBS, pH 7.4
Handling Advice:	Aliquot to avoid repeated freezing and thawing.
Storage:	-20 °C
Storage Comment:	Store at -20°C or lower. Aliquot to avoid repeated freezing and thawing.

Images



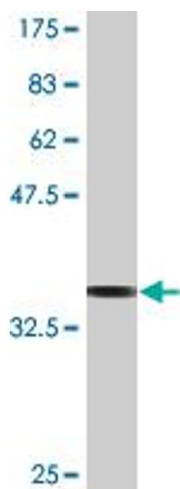
Western Blotting

Image 1. MYL6 monoclonal antibody (M03), clone 1D6.
Western Blot analysis of MYL6 expression in Raw 264.7 .



ELISA

Image 2. Detection limit for recombinant GST tagged MYL6 is approximately 1 ng/ml as a capture antibody.



Western Blotting

Image 3. Western Blot detection against Immunogen (36.74 kDa) .