

Datasheet for ABIN518159
anti-MYLK antibody (AA 1-992)



[Go to Product page](#)

3 Images

Overview

Quantity:	100 µg
Target:	MYLK
Binding Specificity:	AA 1-992
Reactivity:	Human
Host:	Rabbit
Clonality:	Polyclonal
Conjugate:	This MYLK antibody is un-conjugated
Application:	Western Blotting (WB), Proximity Ligation Assay (PLA)

Product Details

Purpose:	Rabbit polyclonal antibody raised against a full-length human MYLK protein.
Immunogen:	MYLK (ENSP00000355024, 1 a.a. ~ 992 a.a) full-length human protein.
Sequence:	MDFRANLQRQ VKPKTVSEEE RKVHSPQQVD FRSVLAKKGT SKTPVPEKVP PPKPATPDFR SVLGGKKKLP AENGSSAET LNAKAVESSK PLSNAQPSGP LKPVGNAKPA ETLKPMGNAK PAETLKPMGN AKPDENLKSA SKEELKKDVK NDVNCKRGHA GTTDNEKRSE SQGTAPAFKQ KLQDVHVAEG KLLLLQCQVS SDPPATIIWT LNGKTLKTTK FIILSQEGSL CSVSIEKALP EDRGLYKCV A KNDAGQAEC S CQVTVD DAPA SENTKAPEMK SRRPKSSLPP VLGTESDATV KKKPAPKTPP KAAMPPQIIQ FPEQKVRAG ESVELFGKVT GTQPITCTWM KFRKQIQESE HMKVENSENG SKLTILAAEQ EHCGCYLLV ENKLGSRQAQ VNLTVVDPKPD PPAGTPCASD IRSSSLTSLW YGSSYDGGSA VQSYSIEIWD SANKTWKELA TCRSTSFNVQ DLLPDHEYKF RVRAINVYGT SEPSQESEL TVGEKPEEPK DEVEVSDDDE KEPEVDYRTV TINTEQKVSD FYDIEERLGS GKFGQVFRVLV EKKTRKVVAG KFFKAYSACE KENIRQEISI MNCLHHPKLV

Product Details

QCVDAFEKA NIVMVLEIVS GGELFERIID EDFELTEREC IKYMRQISEG VEYIHKQGIV
HLDLKPENIM CVNKTGTRIK LIDFGLARRL ENAGSLKVLV GTPEFVAPEV INYEPIGYAT
DMWSIGVICY ILVSGLSPFM GDNDNETLAN VTSATWDFDD EAFDEISDDA KDFISNLLKK
DMKNRLDCTQ CLQHPWLMKD TKNMEAKKLS KDRMKKYMAR RKWQKTGNAV RAIGRLSSMA
MISGLSGRKS STGSPTSPLN AEKLESEEDV SQAFLEAVAE EKPHVKPYFS KTIRDLEVVE
GSAARFDCKI EGYDPPEVVW FKDDQSIRE S RHFQIDYDED GNCSLIISDV CGDDDAKYTC
KAVNSLGEAT CTAELIVETM EEEGEGEGEEE EE

Cross-Reactivity: Human

Characteristics: Antibody reactive against mammalian transfected lysate.

Target Details

Target: MYLK

Alternative Name: MYLK ([MYLK Products](#))

Background: Full Gene Name: myosin light chain kinase

Synonyms:

DKFZp686I10125,FLJ12216,KRP,MLCK,MLCK1,MLCK108,MLCK210,MSTP083,MYLK1,s mMLCK

Gene ID: 4638

NCBI Accession: [NM_053030](#)

Application Details

Application Notes: Optimal working dilution should be determined by the investigator.

Restrictions: For Research Use only

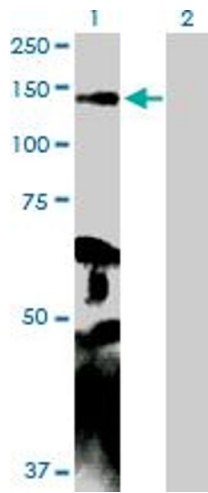
Handling

Buffer: In 1x PBS, pH 7.4

Handling Advice: Aliquot to avoid repeated freezing and thawing.

Storage: -20 °C

Storage Comment: Store at -20°C or lower. Aliquot to avoid repeated freezing and thawing.

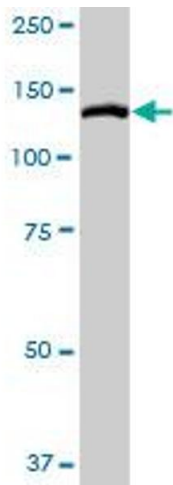


Western Blotting

Image 1. Western Blot analysis of MYLK expression in transfected 293T cell line by MYLK MaxPab polyclonal antibody.

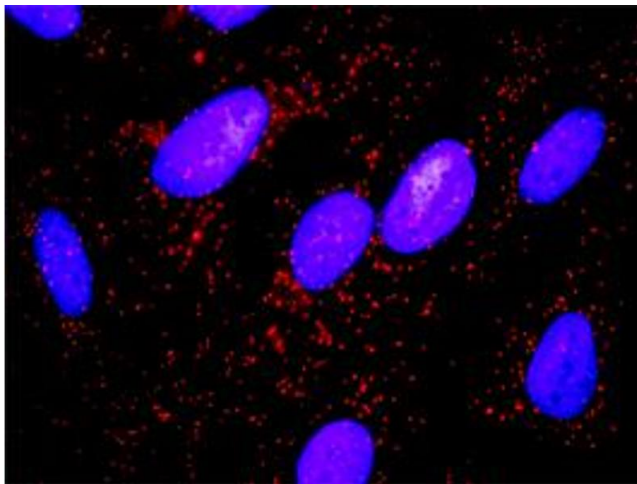
Lane 1: MYLK transfected lysate(110.20 kDa).

Lane 2: Non-transfected lysate.



Western Blotting

Image 2. MYLK MaxPab rabbit polyclonal antibody. Western Blot analysis of MYLK expression in human stomach.



Proximity Ligation Assay

Image 3. Proximity Ligation Analysis of protein-protein interactions between MYLK and CTTN. HeLa cells were stained with anti-MYLK rabbit purified polyclonal 1:1200 and anti-CTTN mouse monoclonal antibody 1:50. Each red dot represents the detection of protein-protein interaction complex, and nuclei were counterstained with DAPI (blue).