



[Go to Product page](#)

Datasheet for ABIN518175  
**anti-MYT1 antibody (AA 586-685)**

1 Image

Overview

Quantity:	100 µg
Target:	MYT1
Binding Specificity:	AA 586-685
Reactivity:	Human
Host:	Mouse
Clonality:	Monoclonal
Conjugate:	This MYT1 antibody is un-conjugated
Application:	Western Blotting (WB), ELISA

Product Details

Purpose:	Mouse monoclonal antibody raised against a partial recombinant MYT1.
Immunogen:	MYT1 (NP_004526, 586 a.a. ~ 685 a.a) partial recombinant protein with GST tag. MW of the GST tag alone is 26 KDa.
Sequence:	DYASFDAQVF GKRMLAPKIQ TSETSPKAFQ CFDYSQDAEA AHMAATAILN LSTRCWEMPE NLSTKPQDLP SKSVDIEVDE NGTLDLSMHK HRKRENAFPS
Clone:	2A7
Isotype:	IgG2a
Cross-Reactivity:	Human
Characteristics:	Antibody Reactive Against Recombinant Protein.

## Target Details

Target:	MYT1
Alternative Name:	MYT1 ( <a href="#">MYT1 Products</a> )
Background:	Full Gene Name: myelin transcription factor 1 Synonyms: C20orf36,MTF1,MYTI,PLPB1
Gene ID:	4661
NCBI Accession:	<a href="#">NM_004535</a>
Pathways:	<a href="#">Cell Division Cycle</a>

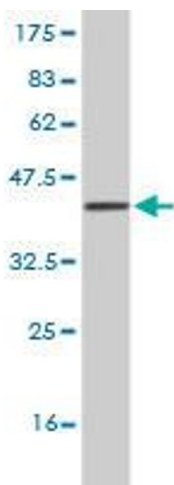
## Application Details

Application Notes:	Optimal working dilution should be determined by the investigator.
Restrictions:	For Research Use only

## Handling

Buffer:	In 1x PBS, pH 7.4
Handling Advice:	Aliquot to avoid repeated freezing and thawing.
Storage:	-20 °C
Storage Comment:	Store at -20°C or lower. Aliquot to avoid repeated freezing and thawing.

## Images



### Western Blotting

**Image 1.** Western Blot detection against Immunogen (36.63 KDa) .