



[Go to Product page](#)

Datasheet for ABIN518195
anti-NBL1 antibody (AA 1-180)

3 Images

Overview

Quantity:	100 µg
Target:	NBL1
Binding Specificity:	AA 1-180
Reactivity:	Human
Host:	Rabbit
Clonality:	Polyclonal
Conjugate:	This NBL1 antibody is un-conjugated
Application:	Western Blotting (WB)

Product Details

Purpose:	Rabbit polyclonal antibody raised against a full-length human NBL1 protein.
Immunogen:	NBL1 (NP_005371.1, 1 a.a. ~ 180 a.a) full-length human protein.
Sequence:	MLRVLVGAVL PAMLLAAPPP INKLALFPDK SAWCEAKNIT QIVGHSGCEA KSIQNRACLG QCFSYSVPNT FPQSTESLVH CDSCMPAQSM WEIVTLECPG HEEVPRVDKL VEKILHCSCQ ACGKEPSHEG LSVYVQGEDG PGSQPGTHPH PHPHPHPGGQ TPEPEDPPGA PHTEEEGAED
Cross-Reactivity:	Human, Mouse
Characteristics:	Antibody reactive against mammalian transfected lysate.

Target Details

Target:	NBL1
---------	------

Target Details

Alternative Name:	NBL1 (NBL1 Products)
Background:	Full Gene Name: neuroblastoma, suppression of tumorigenicity 1 Synonyms: D1S1733E,DAN,DAND1,MGC8972,NB,NO3
Gene ID:	4681
NCBI Accession:	NM_005380

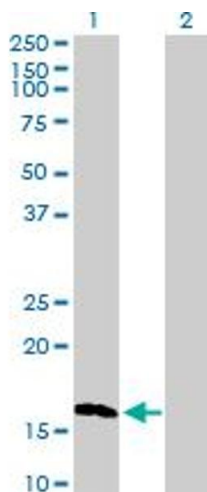
Application Details

Application Notes:	Optimal working dilution should be determined by the investigator.
Restrictions:	For Research Use only

Handling

Buffer:	In 1x PBS, pH 7.4
Handling Advice:	Aliquot to avoid repeated freezing and thawing.
Storage:	-20 °C
Storage Comment:	Store at -20°C or lower. Aliquot to avoid repeated freezing and thawing.

Images

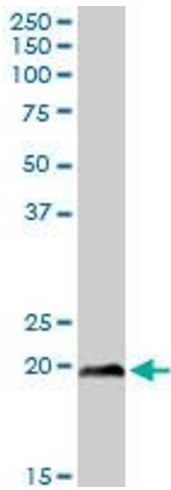


Western Blotting

Image 1. Western Blot analysis of NBL1 expression in transfected 293T cell line by NBL1 MaxPab polyclonal antibody.

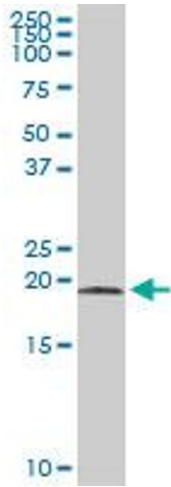
Lane 1: NBL1 transfected lysate(19.30 kDa).

Lane 2: Non-transfected lysate.



Western Blotting

Image 2. NBL1 MaxPab rabbit polyclonal antibody. Western Blot analysis of NBL1 expression in human colon.



Western Blotting

Image 3. NBL1 MaxPab rabbit polyclonal antibody. Western Blot analysis of NBL1 expression in mouse lung.