



[Go to Product page](#)

Datasheet for ABIN518204
anti-NCAM2 antibody (AA 1-837)

1 Image

Overview

Quantity:	100 µg
Target:	NCAM2
Binding Specificity:	AA 1-837
Reactivity:	Human
Host:	Rabbit
Clonality:	Polyclonal
Conjugate:	This NCAM2 antibody is un-conjugated
Application:	Western Blotting (WB)

Product Details

Purpose:	Rabbit polyclonal antibody raised against a full-length human NCAM2 protein.
Immunogen:	NCAM2 (NP_004531.2, 1 a.a. ~ 837 a.a) full-length human protein.
Sequence:	MSLLLSFYLL GLLVSSGQAL LQVTISLSKV ELSVGESKFF TCTAIGEPES IDWYNPQGEK IISTQRVVVQ KEGVRSRLTI YNANIEDAGI YRCQATDAKG QTQEATVVLE IYQKLTFFREV VSPQEFKQGE DAEVVCRVSS SPAPAVSWLY HNEEVTTISD NRFAMLANNN LQILNINKSD EGIYRCEGRV EARGEIDFRD IIVIVNVPPA ISMPQKSFNA TAERGEEMTF SCRASGSPEP AISWFRNGKL IEENEKYILK GSNTELTVRN IINSDGGPYV CRATNKAGED EKQAFLLQVAV QPHIIQLKNE TTYENGQVTL VCDAGEGPIPI EITWKRAVDG FTFTEGDKSL DGRIEVKQGH GSSSLHIKDV KLSDSGRYDC EAASRIGGHQ KSMYLDIEYA PKFISNQTIY YSWEGNPINI SCDVKSPPA SIHWRRDKLV LPAKNTTNLK TYSTGRKMIL EIAPTSNDNF GRYNCTATNH IGTRFQEYIL ALADVPSSPY GVKIIELSQT TAKVSFNKPD SHGGVPIHHY QVDVKEVASE IWKIVRSHGV QTMVVLNMLE PNTTYEIRVA AVNGKGQGDY SKIEIFQTLV VREPSPPSIH

Product Details

GQPSSGKSFK LSITKQDDGG APILEYIVKY RSKDKEDQWL EKKVQGNKDH IILEHLQWTM
GYEVQITAAN RLGyseptvy EFSMPPKPNi IKDTLfnGLG LGAVIGLGVA ALLLILVvTD
VSCFFIRQCG LLMCITRRMC GKkSGSSGKS KELEEGKAAY LKDGsKEPIV EMRTEDERVt
NHEDGSPVNE PNETTPLTEP EKLPLKEEDG KEALNPETIE IKVSNDIIQS KEDDSKA

Cross-Reactivity: Human

Characteristics: Antibody reactive against mammalian transfected lysate.

Target Details

Target: NCAM2

Alternative Name: NCAM2 ([NCAM2 Products](#))

Background: Full Gene Name: neural cell adhesion molecule 2
Synonyms: MGC51008,NCAM21

Gene ID: 4685

NCBI Accession: [NM_004540](#)

Application Details

Application Notes: Optimal working dilution should be determined by the investigator.

Restrictions: For Research Use only

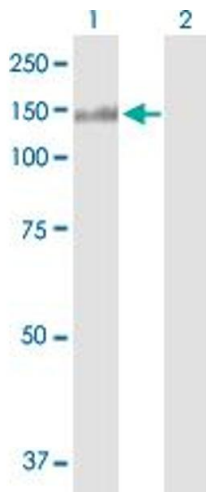
Handling

Buffer: In 1x PBS, pH 7.4

Handling Advice: Aliquot to avoid repeated freezing and thawing.

Storage: -20 °C

Storage Comment: Store at -20°C or lower. Aliquot to avoid repeated freezing and thawing.



Western Blotting

Image 1. Western Blot analysis of NCAM2 expression in transfected 293T cell line by NCAM2 MaxPab polyclonal antibody.

Lane 1: NCAM2 transfected lysate(93.00 KDa).

Lane 2: Non-transfected lysate.