



[Go to Product page](#)

Datasheet for ABIN518238  
**anti-NDUFB6 antibody (AA 1-128)**

3 Images

Overview

Quantity:	100 µL
Target:	NDUFB6
Binding Specificity:	AA 1-128
Reactivity:	Human
Host:	Rabbit
Clonality:	Polyclonal
Conjugate:	This NDUFB6 antibody is un-conjugated
Application:	Western Blotting (WB), Immunoprecipitation (IP)

Product Details

Purpose:	Rabbit polyclonal antibody raised against a full-length human NDUFB6 protein.
Immunogen:	NDUFB6 (NP_002484.1, 1 a.a. ~ 128 a.a) full-length human protein.
Sequence:	MTGYTPDEKL RLQQLRELRR RWLKDQELSP REPVLPQKM GPMEKFWNKF LENKSPWRKM VHGVYKKSIF VFTHVLPVW IHHYMKYHV SEKPYGIVEK KSRIFPGDTI LETGEVPPM KEFPDQHH
Cross-Reactivity:	Human, Mouse
Characteristics:	Antibody reactive against mammalian transfected lysate.

Target Details

Target:	NDUFB6
---------	--------

## Target Details

Alternative Name:	NDUFB6 ( <a href="#">NDUFB6 Products</a> )
Background:	Full Gene Name: NADH dehydrogenase (ubiquinone) 1 beta subcomplex, 6, 17 kDa Synonyms: B17,CI,MGC13675
Gene ID:	4712
NCBI Accession:	<a href="#">NM_002493</a>

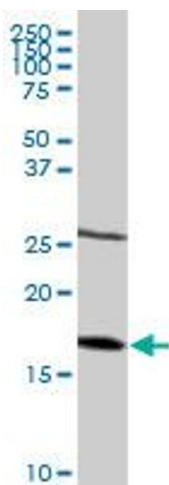
## Application Details

Application Notes:	Optimal working dilution should be determined by the investigator.
Restrictions:	For Research Use only

## Handling

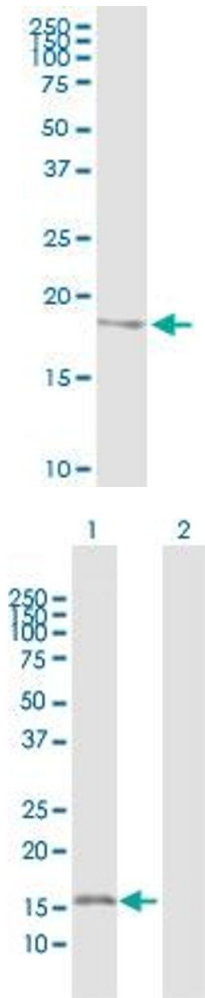
Format:	Liquid
Buffer:	No additive
Preservative:	Without preservative
Handling Advice:	Aliquot to avoid repeated freezing and thawing.
Storage:	-20 °C
Storage Comment:	Store at -20°C or lower. Aliquot to avoid repeated freezing and thawing.

## Images



### Western Blotting

**Image 1.** NDUFB6 MaxPab rabbit polyclonal antibody. Western Blot analysis of NDUFB6 expression in mouse kidney.



### Immunoprecipitation

**Image 2.** Immunoprecipitation of NDUFB6 transfected lysate using anti-NDUFB6 MaxPab rabbit polyclonal antibody and Protein A Magnetic Bead , and immunoblotted with NDUFB6 purified MaxPab mouse polyclonal antibody (B01P) .

### Western Blotting

**Image 3.** Western Blot analysis of NDUFB6 expression in transfected 293T cell line by NDUFB6 MaxPab polyclonal antibody.

Lane 1: NDUFB6 transfected lysate(15.5 KDa).

Lane 2: Non-transfected lysate.