



[Go to Product page](#)

Datasheet for ABIN518277
anti-NEFH antibody (AA 263-363)

3 Images

Overview

Quantity:	100 µg
Target:	NEFH
Binding Specificity:	AA 263-363
Reactivity:	Human
Host:	Mouse
Clonality:	Monoclonal
Conjugate:	This NEFH antibody is un-conjugated
Application:	Western Blotting (WB), ELISA

Product Details

Purpose:	Mouse monoclonal antibody raised against a partial recombinant NEFH.
Immunogen:	NEFH (NP_066554, 263 a.a. ~ 363 a.a) partial recombinant protein with GST tag. MW of the GST tag alone is 26 KDa.
Sequence:	LKCDVTSALR EIRAQLEGHA VQSTLQSEEW FRVRLDRLSE AAKVNTDAMR SAQEEITEYR RQLQARTTEL EALKSTKDSL ERQRSELEDR HQADIASYQE A
Clone:	2E8
Isotype:	IgG2a
Cross-Reactivity:	Human
Characteristics:	Antibody Reactive Against Recombinant Protein.

Target Details

Target:	NEFH
Alternative Name:	NEFH (NEFH Products)
Background:	Full Gene Name: neurofilament, heavy polypeptide Synonyms: NFH
Gene ID:	4744
NCBI Accession:	NM_021076

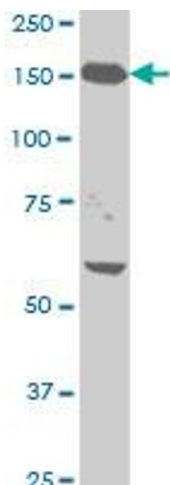
Application Details

Application Notes:	Optimal working dilution should be determined by the investigator.
Restrictions:	For Research Use only

Handling

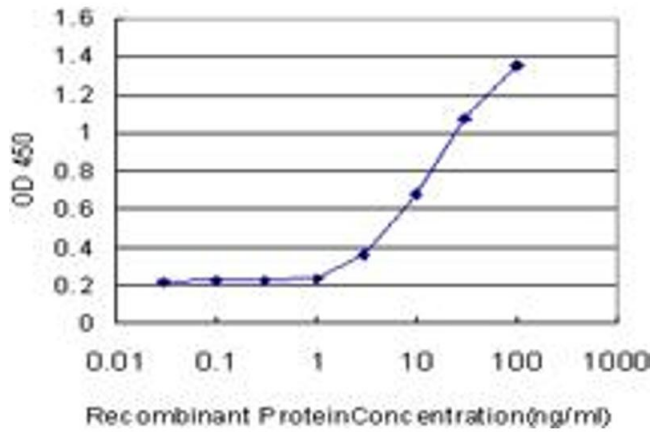
Buffer:	In 1x PBS, pH 7.4
Handling Advice:	Aliquot to avoid repeated freezing and thawing.
Storage:	-20 °C
Storage Comment:	Store at -20°C or lower. Aliquot to avoid repeated freezing and thawing.

Images



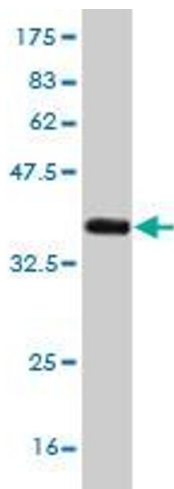
Western Blotting

Image 1. NEFH monoclonal antibody (M01), clone 2E8
Western Blot analysis of NEFH expression in HeLa .



ELISA

Image 2. Detection limit for recombinant GST tagged NEFH is approximately 0.03ng/ml as a capture antibody.



Western Blotting

Image 3. Western Blot detection against Immunogen (36.85 KDa).