



[Go to Product page](#)

Datasheet for ABIN518315

anti-NRF2 antibody (AA 71-170)

3 Images

1 Publication

Overview

Quantity:	100 µg
Target:	NRF2 (NFE2L2)
Binding Specificity:	AA 71-170
Reactivity:	Human
Host:	Mouse
Clonality:	Monoclonal
Conjugate:	This NRF2 antibody is un-conjugated
Application:	Western Blotting (WB), ELISA, Immunofluorescence (IF)

Product Details

Purpose:	Mouse monoclonal antibody raised against a partial recombinant NFE2L2.
Immunogen:	NFE2L2 (AAH11558, 71 a.a. ~ 170 a.a) partial recombinant protein with GST tag. MW of the GST tag alone is 26 KDa.
Sequence:	FAQLQLDEET GEFLPIQPAQ HIQSETSGSA NYSQVAHIPK SDALYFDDCM QLLAQTFPFV DDNEVSSATF QSLVPDIPGH IESPVFIATN QAQSPETSVA
Clone:	1B8
Isotype:	IgG2b
Cross-Reactivity:	Human
Characteristics:	Antibody Reactive Against Recombinant Protein.

Target Details

Target:	NRF2 (NFE2L2)
Alternative Name:	NFE2L2 (NFE2L2 Products)
Background:	Full Gene Name: nuclear factor (erythroid-derived 2)-like 2 Synonyms: NRF2
Gene ID:	4780
Pathways:	ER-Nucleus Signaling , Negative Regulation of intrinsic apoptotic Signaling

Application Details

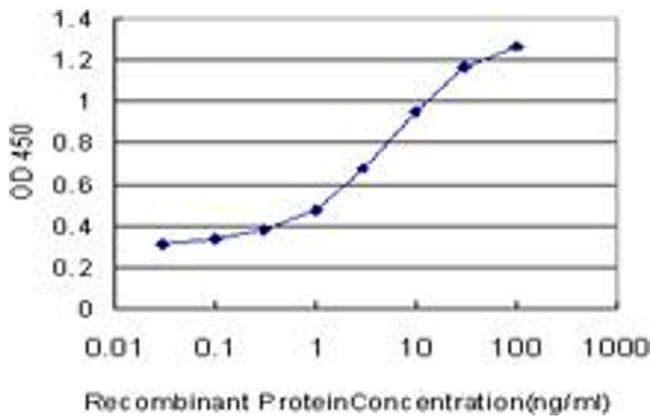
Application Notes:	Optimal working dilution should be determined by the investigator.
Restrictions:	For Research Use only

Handling

Buffer:	In 1x PBS, pH 7.4
Handling Advice:	Aliquot to avoid repeated freezing and thawing.
Storage:	-20 °C
Storage Comment:	Store at -20°C or lower. Aliquot to avoid repeated freezing and thawing.

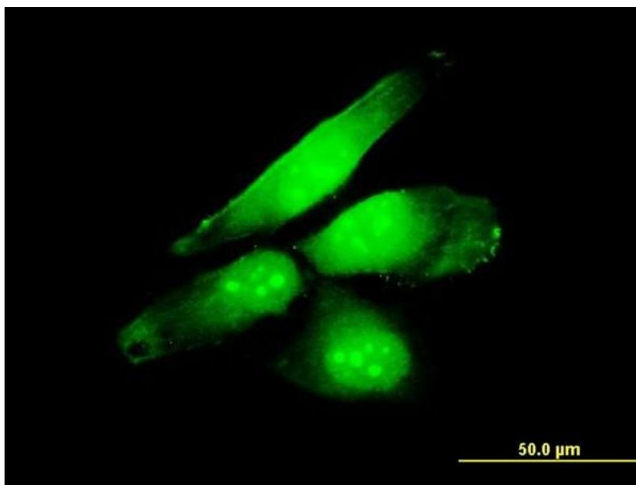
Publications

Product cited in:	Lindl, Jordan-Sciutto: "Examining the endogenous antioxidant response through immunofluorescent analysis of Nrf2 in tissue." in: Methods in molecular biology (Clifton, N.J.) , Vol. 477, pp. 229-43, (2008) (PubMed).
-------------------	---



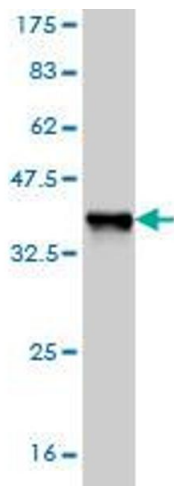
ELISA

Image 1. Detection limit for recombinant GST tagged NFE2L2 is approximately 0.1 ng/ml as a capture antibody.



Immunofluorescence

Image 2. Immunofluorescence of monoclonal antibody to NFE2L2 on HeLa cell. [antibody concentration 10 ug/ml]



Western Blotting

Image 3. Western Blot detection against Immunogen (36.63 KDa) .