

Datasheet for ABIN518335
anti-NFKBIB antibody (AA 1-356)

2 Images

[Go to Product page](#)

Overview

| | |
|----------------------|---|
| Quantity: | 100 µg |
| Target: | NFKBIB |
| Binding Specificity: | AA 1-356 |
| Reactivity: | Human |
| Host: | Rabbit |
| Clonality: | Polyclonal |
| Conjugate: | This NFKBIB antibody is un-conjugated |
| Application: | Western Blotting (WB), Proximity Ligation Assay (PLA) |

Product Details

| | |
|-------------------|--|
| Purpose: | Rabbit polyclonal antibody raised against a full-length human NFKBIB protein. |
| Immunogen: | NFKBIB (NP_002494.2, 1 a.a. ~ 356 a.a) full-length human protein. |
| Sequence: | MAGVACLGKA ADADEWCDSG LGSLGPDAAG PGGPGLGAEL GPGLSWAPLV FGYVTEDGDT ALHLAVIHQH EPFLDFLLGF SAGTEYMDLQ NDLGQTALHL AAILGETSTV EKLYAAGAGL CVAERRGHTA LHLACRVGAH ACARALLQPR PRRPREAPDT YLAQGPDRTP DTNHTPVALY PDSLDLEKEEE ESEEDWKLQL EAENYEGHTP LHVAVIHKDV EMVRLLRDAG ADLDKPEPTC GRSPLHLAVE AQAADVLELL LRAGANPAAR MYGGRTPLGS AMLRPNPILA RLLRAHGAPE PEGEDEKSGP CSSSSDSDSG DEGDEYDDIV VHSSRSQTRL PPTPASKPLP DDP RPV |
| Cross-Reactivity: | Human |
| Characteristics: | Antibody reactive against mammalian transfected lysate. |

Target Details

| | |
|-------------------|---|
| Target: | NFKBIB |
| Alternative Name: | NFKBIB (NFKBIB Products) |
| Background: | Full Gene Name: nuclear factor of kappa light polypeptide gene enhancer in B-cells inhibitor, beta Synonyms: IKBB,TRIP9 |
| Gene ID: | 4793 |
| NCBI Accession: | NM_002503 |
| Pathways: | NF-kappaB Signaling , Activation of Innate immune Response , Maintenance of Protein Location , Toll-Like Receptors Cascades |

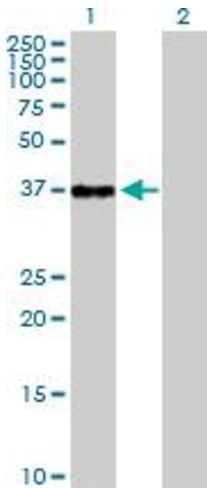
Application Details

| | |
|--------------------|--|
| Application Notes: | Optimal working dilution should be determined by the investigator. |
| Restrictions: | For Research Use only |

Handling

| | |
|------------------|--|
| Buffer: | In 1x PBS, pH 7.4 |
| Handling Advice: | Aliquot to avoid repeated freezing and thawing. |
| Storage: | -20 °C |
| Storage Comment: | Store at -20°C or lower. Aliquot to avoid repeated freezing and thawing. |

Images

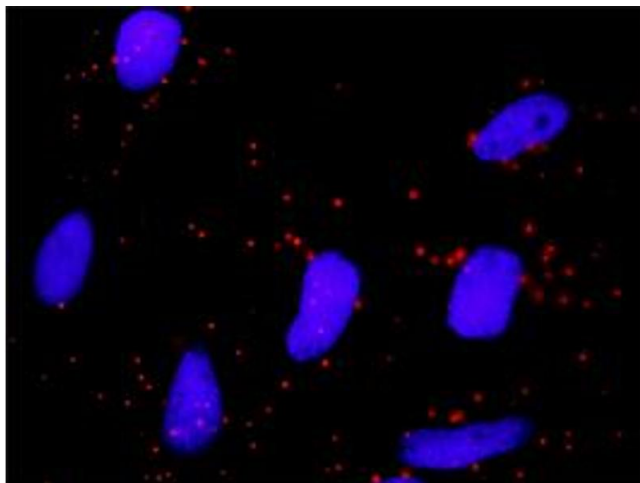


Western Blotting

Image 1. Western Blot analysis of NFKBIB expression in transfected 293T cell line by NFKBIB MaxPab polyclonal antibody.

Lane 1: NFKBIB transfected lysate(37.80 KDa).

Lane 2: Non-transfected lysate.



Proximity Ligation Assay

Image 2. Proximity Ligation Analysis of protein-protein interactions between NFKBIB and FBXW11. HeLa cells were stained with anti-NFKBIB rabbit purified polyclonal 1:1200 and anti-FBXW11 mouse monoclonal antibody 1:50. Each red dot represents the detection of protein-protein interaction complex, and nuclei were counterstained with DAPI (blue).