

Datasheet for ABIN518379
anti-NME2 antibody (AA 1-152)



[Go to Product page](#)

3 Images

Overview

Quantity:	100 µg
Target:	NME2
Binding Specificity:	AA 1-152
Reactivity:	Human
Host:	Mouse
Clonality:	Monoclonal
Conjugate:	This NME2 antibody is un-conjugated
Application:	Western Blotting (WB), ELISA

Product Details

Purpose:	Mouse monoclonal antibody raised against a full length recombinant NME2.
Immunogen:	NME2 (AAH02476, 1 a.a. ~ 152 a.a) full-length recombinant protein with GST tag. MW of the GST tag alone is 26 KDa.
Sequence:	MANLERTFIA IKPDGVQRGL VGEIIKRFEQ KGFRLVAMKF LRASEEHLKQ HYIDLKDRPF FPGLVKYMNS GPVAMVWEG LNVVKTGRVM LGETNPADSK PGTIRGDFCI QVGRNIIHGS DSVKSAEKEI SLWFKPEELV DYKSCAHDWV YE
Clone:	4A7
Isotype:	IgG2b
Cross-Reactivity:	Human
Characteristics:	Antibody Reactive Against Recombinant Protein.

Target Details

Target:	NME2
Alternative Name:	NME2 (NME2 Products)
Background:	Full Gene Name: non-metastatic cells 2, protein (NM23B) expressed in Synonyms: MGC111212,NDPK-B,NDPKB,NM23-H2,NM23B,puf
Gene ID:	4831

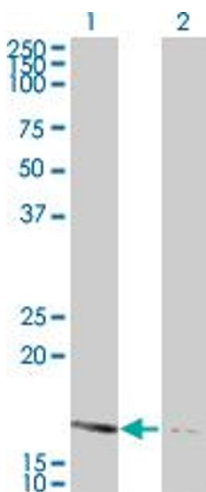
Application Details

Application Notes:	Optimal working dilution should be determined by the investigator.
Restrictions:	For Research Use only

Handling

Buffer:	In 1x PBS, pH 7.4
Handling Advice:	Aliquot to avoid repeated freezing and thawing.
Storage:	-20 °C
Storage Comment:	Store at -20°C or lower. Aliquot to avoid repeated freezing and thawing.

Images

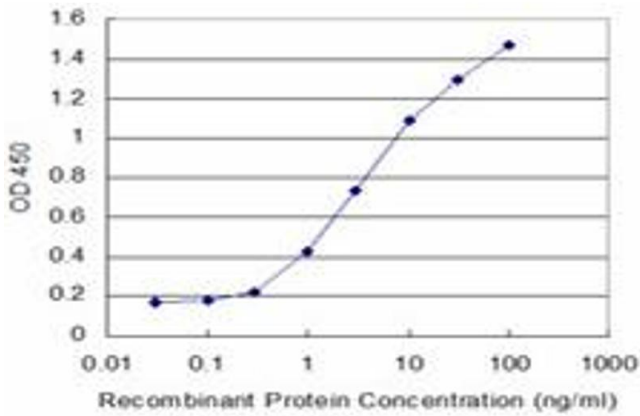


Western Blotting

Image 1. Western Blot analysis of NME2 expression in transfected 293T cell line by NME2 monoclonal antibody (M12), clone 4A7.

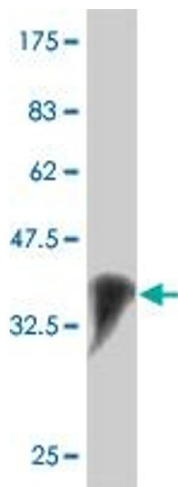
Lane 1: NME2 transfected lysate(17.298 KDa).

Lane 2: Non-transfected lysate.



ELISA

Image 2. Detection limit for recombinant GST tagged NME2 is approximately 0.3ng/ml as a capture antibody.



Western Blotting

Image 3. Western Blot detection against Immunogen (42.46 kDa).