

Datasheet for ABIN518385
anti-NME3 antibody (AA 73-169)



[Go to Product page](#)

3 Images

Overview

Quantity:	100 µg
Target:	NME3
Binding Specificity:	AA 73-169
Reactivity:	Human
Host:	Mouse
Clonality:	Monoclonal
Conjugate:	This NME3 antibody is un-conjugated
Application:	Western Blotting (WB), ELISA

Product Details

Purpose:	Mouse monoclonal antibody raised against a partial recombinant NME3.
Immunogen:	NME3 (NP_002504.2, 73 a.a. ~ 169 a.a) partial recombinant protein with GST tag. MW of the GST tag alone is 26 KDa.
Sequence:	RERPFYGR LV KYMASGPVVA MVWQGLDVVR TSRALIGATN PADAPPGTIR GDFCIEVGKN LIHGSDSVES ARREIALWFR ADELLCWEDS AGHWLYE
Clone:	3G10
Isotype:	IgG2a
Cross-Reactivity:	Human
Characteristics:	Antibody Reactive Against Recombinant Protein.

Target Details

Target:	NME3
Alternative Name:	NME3 (NME3 Products)
Background:	Full Gene Name: non-metastatic cells 3, protein expressed in Synonyms: DR-nm23,KIAA0516,NDPK-C,NDPKC,NM23-H3,c371H6.2
Gene ID:	4832
NCBI Accession:	NM_002513
Pathways:	Nucleotide Phosphorylation, Ribonucleoside Biosynthetic Process

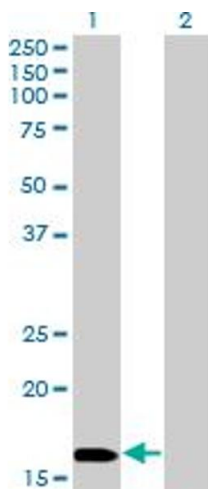
Application Details

Application Notes:	Optimal working dilution should be determined by the investigator.
Restrictions:	For Research Use only

Handling

Buffer:	In 1x PBS, pH 7.4
Handling Advice:	Aliquot to avoid repeated freezing and thawing.
Storage:	-20 °C
Storage Comment:	Store at -20°C or lower. Aliquot to avoid repeated freezing and thawing.

Images

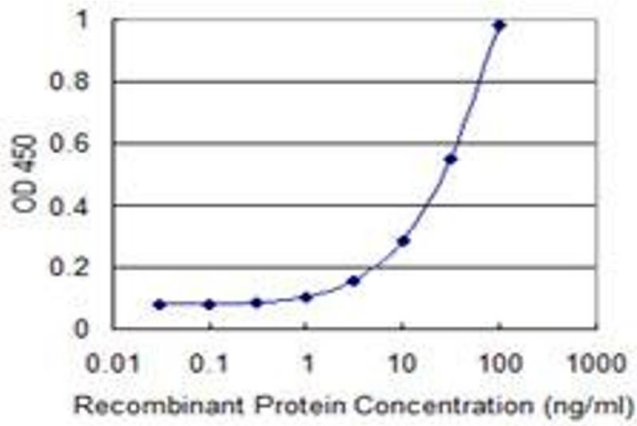


Western Blotting

Image 1. Western Blot analysis of NME3 expression in transfected 293T cell line by NME3 monoclonal antibody (M13), clone 3G10.

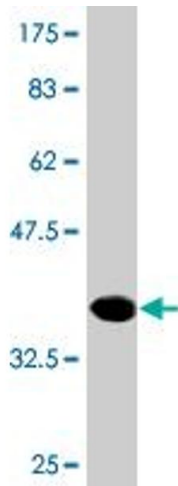
Lane 1: NME3 transfected lysate(19 kDa).

Lane 2: Non-transfected lysate.



ELISA

Image 2. Detection limit for recombinant GST tagged NME3 is 0.3 ng/ml as a capture antibody.



Western Blotting

Image 3. Western Blot detection against Immunogen (36.41 kDa).