

Datasheet for ABIN518431  
**anti-SLC11A2 antibody (AA 1-65)**

## 3 Images

[Go to Product page](#)

## Overview

|                      |   |
|----------------------|---|
| Quantity:            | 100 µg  |
| Target:              | SLC11A2   |
| Binding Specificity: | AA 1-65   |
| Reactivity:          | Human   |
| Host:                | Mouse   |
| Clonality:           | Monoclonal  |
| Conjugate:           | This SLC11A2 antibody is un-conjugated                |
| Application:         | ELISA, Western Blotting (WB), Immunofluorescence (IF) |

## Product Details

|                   |   |
|-------------------|---|
| Purpose:          | Mouse monoclonal antibody raised against a partial recombinant SLC11A2.   |
| Immunogen:        | SLC11A2 (NP_000608, 1 a.a. ~ 65 a.a) partial recombinant protein with GST tag. MW of the GST tag alone is 26 KDa. |
| Sequence:         | MVLGPEQKMS DDSVSGDHGE SASLGNINPA YSNPSLSQSP GDSEEFATY FNEKISIPPEE EYSCF   |
| Clone:            | 4G2   |
| Isotype:          | IgG2b   |
| Cross-Reactivity: | Human   |
| Characteristics:  | Antibody Reactive Against Recombinant Protein.  |

## Target Details

|                   |   |
|-------------------|---|
| Target:           | SLC11A2   |
| Alternative Name: | SLC11A2 ( <a href="#">SLC11A2 Products</a> )  |
| Background:       | Full Gene Name: solute carrier family 11 (proton-coupled divalent metal ion transporters), member 2<br>Synonyms: DCT1,DMT1,FLJ37416,NRAMP2          |
| Gene ID:          | 4891  |
| NCBI Accession:   | <a href="#">NM_000617</a>   |
| Pathways:         | <a href="#">Transition Metal Ion Homeostasis</a> , <a href="#">Proton Transport</a> , <a href="#">Positive Regulation of Endopeptidase Activity</a> |

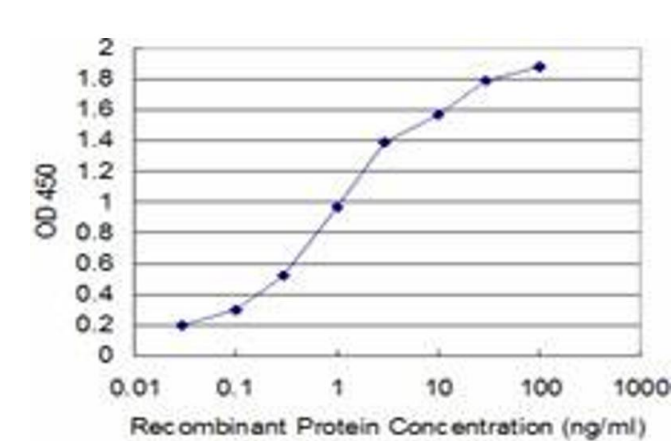
## Application Details

|                    |  |
|--------------------|--|
| Application Notes: | Optimal working dilution should be determined by the investigator. |
| Restrictions:      | For Research Use only  |

## Handling

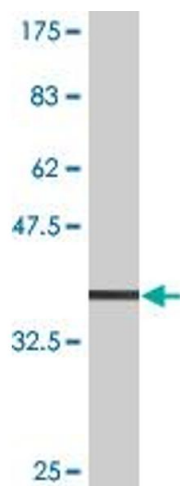
|                  |  |
|------------------|--|
| Buffer:          | In 1x PBS, pH 7.4  |
| Handling Advice: | Aliquot to avoid repeated freezing and thawing.                          |
| Storage:         | -20 °C   |
| Storage Comment: | Store at -20°C or lower. Aliquot to avoid repeated freezing and thawing. |

## Images



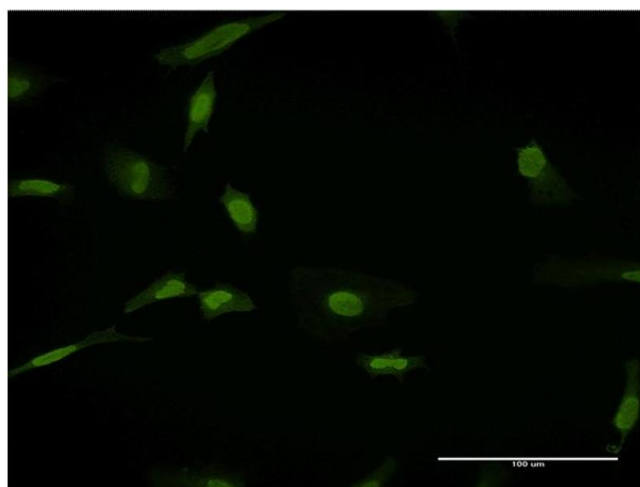
**ELISA**

**Image 1.** Detection limit for recombinant GST tagged SLC11A2 is approximately 0.03ng/ml as a capture antibody.



### Western Blotting

**Image 2.** Western Blot detection against Immunogen (32.89 kDa) .



### Immunofluorescence

**Image 3.** Immunofluorescence of monoclonal antibody to SLC11A2 on HeLa cell. [antibody concentration 10 ug/ml]