



[Go to Product page](#)

Datasheet for ABIN518436
anti-NRF1 antibody (AA 1-522)

1 Image

Overview

Quantity:	100 µg
Target:	NRF1
Binding Specificity:	AA 1-522
Reactivity:	Human
Host:	Rabbit
Clonality:	Polyclonal
Conjugate:	This NRF1 antibody is un-conjugated
Application:	Western Blotting (WB)

Product Details

Purpose:	Rabbit polyclonal antibody raised against a full-length human NRF1 protein.
Immunogen:	NRF1 (AAH16925.1, 1 a.a. ~ 522 a.a) full-length human protein.
Sequence:	MEEHGVTQTE HMATIEAHAV AQQVQQVHVA TYTEHSMLSA DEDSPSSPED TSYDDSDILN STAADEVTAH LAAAGPVGMA AAAAVATGKK RKRPHVFESN PSIRKRQQTR LLRKLRLATLD EYTTRVGQQA IVLCISPSKP NPVFKVFGAA PLENVVRKYK SMILEDLESA LAEHAPAPQE VNSELPPLTI DGIPVSVDKM TQAQLRAFIP EMLKYSTGRG KPGWKGESCK PIWWPEDIPW ANVRSDVRTE EQKQRVSWTQ ALRTIVKNCY KQHGRELLY AFEDQQTQTQ ATATHSIAHL VPSQTVVQTF SNPDGTVSLI QVGTGATVAT LADASELPTT VTVAQVNYSA VADGEVEQNW ATLQGGEMTI QTTQASEATQ AVASLAEAAV AASQEMQQGA TVTMALNSEA AAHAVATLAE ATLQGGGQIV LSGETAAAVG ALTGVQDANG LFMADRAGRK WILTDKATGL VQIPVSMYQT VVTSLAQGNG PVQVAMAPVT TRISDSAVTM DGQAVEVWTL EQ

Product Details

Cross-Reactivity:	Human, Mouse
Characteristics:	Antibody reactive against mammalian transfected lysate.

Target Details

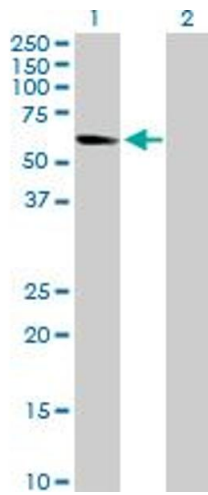
Target:	NRF1
Alternative Name:	NRF1 (NRF1 Products)
Background:	Full Gene Name: nuclear respiratory factor 1 Synonyms: ALPHA-PAL
Gene ID:	4899
Pathways:	Regulation of Lipid Metabolism by PPARalpha

Application Details

Application Notes:	Optimal working dilution should be determined by the investigator.
Restrictions:	For Research Use only

Handling

Buffer:	In 1x PBS, pH 7.4
Handling Advice:	Aliquot to avoid repeated freezing and thawing.
Storage:	-20 °C
Storage Comment:	Store at -20°C or lower. Aliquot to avoid repeated freezing and thawing.



Western Blotting

Image 1. Western Blot analysis of NRF1 expression in transfected 293T cell line by NRF1 MaxPab polyclonal antibody.

Lane 1: NRF1 transfected lysate(55.70 KDa).

Lane 2: Non-transfected lysate.