

Datasheet for ABIN518464  
**anti-Nucleobindin 1 antibody (AA 1-461)**



[Go to Product page](#)

3 Images

Overview

Quantity:	50 µg
Target:	Nucleobindin 1 (NUCB1)
Binding Specificity:	AA 1-461
Reactivity:	Human
Host:	Mouse
Clonality:	Polyclonal
Conjugate:	This Nucleobindin 1 antibody is un-conjugated
Application:	Western Blotting (WB), Immunofluorescence (IF)

Product Details

Purpose:	Mouse polyclonal antibody raised against a full-length human NUCB1 protein.
Immunogen:	NUCB1 (NP_006175.2, 1 a.a. ~ 461 a.a) full-length human protein.
Sequence:	MPPSGPRGTL LLLPLLLLLL LRAVLAVPLE RGAPNKEETP ATESPDTGLY YHRYLQEVID VLETDGHFRE KLQAANAEDI KSGKLSRELD FVSHHVRTKL DELKRQEVSR LRMLLKAKMD AEQDPNVQVD HLNLLKQFEH LDPQNQHTFE ARDLELLIQT ATRDLAQYDA AHHEEFKRYE MLKEHERRRY LESLGEEQRK EAERKLEEQQ RRHREHPKVN VPGSQAQLKE VWEELDGLDP NRFNPKTFFI LHDINSDGVL DEQELEALFT KELEKVYDPK NEEDDMREME EERLRMREHV MKNVDTNQDR LVTLEEFLLAS TQRKEFGDTG EGWETVEMHP AYTEEELRRF EEELAAREAE LNAKAQRSLQ ETEALGRSQG RLEAQKRELQ QAVLHMEQRK QQQQQQGHK APAAHPEGQL KFHPDTPDDVP VPAPAGDQKE VDTSEKKLLE RLPEVEVPQH L
Cross-Reactivity:	Human

## Product Details

Characteristics: Antibody reactive against mammalian transfected lysate.

## Target Details

Target: Nucleobindin 1 (NUCB1)

Alternative Name: NUCB1 ([NUCB1 Products](#))

Background: Full Gene Name: nucleobindin 1  
Synonyms: DKFZp686A15286,FLJ40471,NUC

Gene ID: 4924

NCBI Accession: [NM\\_006184](#)

## Application Details

Application Notes: Optimal working dilution should be determined by the investigator.

Restrictions: For Research Use only

## Handling

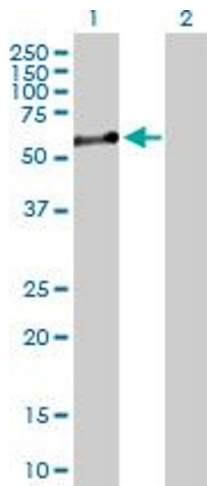
Buffer: In 1x PBS, pH 7.4

Handling Advice: Aliquot to avoid repeated freezing and thawing.

Storage: -20 °C

Storage Comment: Store at -20°C or lower. Aliquot to avoid repeated freezing and thawing.

## Images

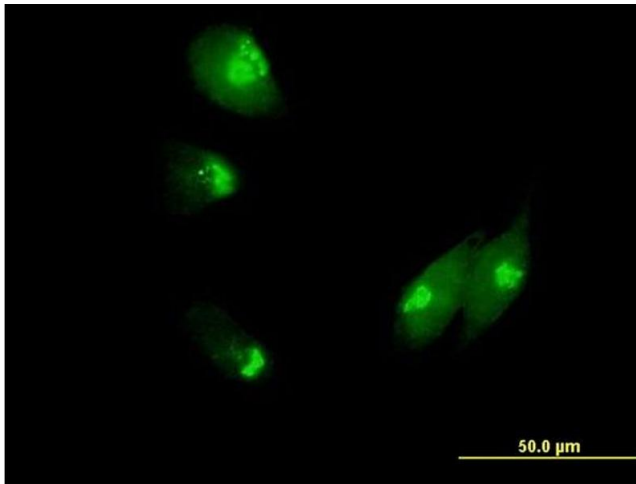


### Western Blotting

**Image 1.** Western Blot analysis of NUCB1 expression in transfected 293T cell line by NUCB1 MaxPab polyclonal antibody.

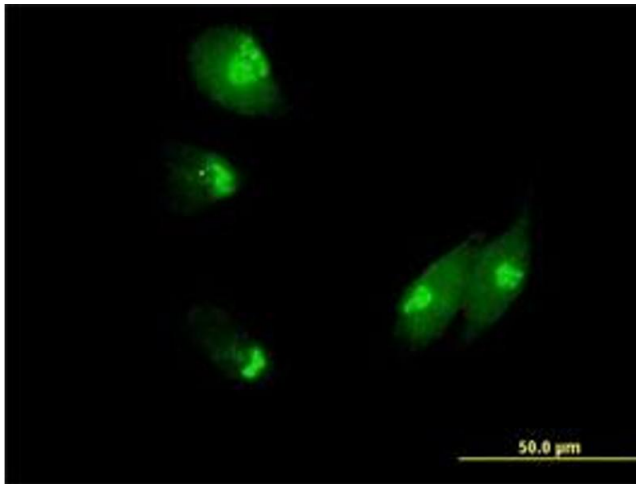
Lane 1: NUCB1 transfected lysate(50.71 KDa).

Lane 2: Non-transfected lysate.



#### Immunofluorescence

**Image 2.** Immunofluorescence of purified MaxPab antibody to NUCB1 on HeLa cell. [antibody concentration 10 μg/ml]



#### Immunofluorescence

**Image 3.** Immunofluorescence of purified MaxPab antibody to NUCB1 on HeLa cell. (antibody concentration 10 μg/mL)