

Datasheet for ABIN518486  
**anti-NVL antibody (AA 1-659)**



[Go to Product page](#)

3 Images

1 Publication

### Overview

Quantity:	50 µg
Target:	NVL
Binding Specificity:	AA 1-659
Reactivity:	Human
Host:	Mouse
Clonality:	Polyclonal
Conjugate:	This NVL antibody is un-conjugated
Application:	Western Blotting (WB), Immunofluorescence (IF)

### Product Details

Purpose:	Mouse polyclonal antibody raised against a full-length human NVL protein.
Immunogen:	NVL (AAH12105.1, 1 a.a. ~ 659 a.a) full-length human protein.
Sequence:	MEDYPDPQDS KDSSLLES DM KRKGKLNKNG SKRKKEDLQE VDGEIEAVLQ KKAKARGLEF QISNVKFEDV GGNDMTLKEV CKMLIHMRHP EVYHHLGVVP PRGVLLHGPP GCGKTL LAHA IAGELDLPIL KVA APEIVSG VSGESEQKLR ELFEQAVSNA PCII FIDEID AITPKREVAS KDMERRIVAQ LLTCMDDLNN VAATARVLVI GATNRPDSL D PALRRAGRFD REICLGIPDE ASRERILQTL CRKLRLPQAF DFCHLAHLTP GFVGADLMAL CREAAMCAVN RVLMLKLEQQ KKNPEMEDLP SKGVQEERLG TEPTSETQDE LQRLGLLRD QDPLSEEQMQ GLCIELNDFI VALSSVQPSA KREGFVTPVN VTWADIGALE DIREEL TMAI LAPVRNPDQF KALGLVTPAG VLLAGPPGCG KTL LAKAVAN ESGLNFISVK GPELLNMYVG ESERAVRQVF QRAKNSAPCV IFFDEVDALC PRRS DRETGA SVRVVNQLLT EMDGLEARQQ VFIMAATNRP DIIDPAILRP GR LDKTLFVG LPPPADRLAI LKTITKNGTK PPLDADV NLE AIAGDLRCDC YTGADLSALV REASICALRQ

## Product Details

---

EMARQKSGNE KGELKVSHKH FEEAFKKVRS SISKKDQIMY ERLQESLSR

---

Cross-Reactivity: Human

---

Characteristics: Antibody reactive against mammalian transfected lysate.

---

## Target Details

---

Target: NVL

---

Alternative Name: NVL ([NVL Products](#))

---

Background: Full Gene Name: nuclear VCP-like  
Synonyms:

---

Gene ID: 4931

---

## Application Details

---

Application Notes: Optimal working dilution should be determined by the investigator.

---

Restrictions: For Research Use only

---

## Handling

---

Buffer: In 1x PBS, pH 7.4

---

Handling Advice: Aliquot to avoid repeated freezing and thawing.

---

Storage: -20 °C

---

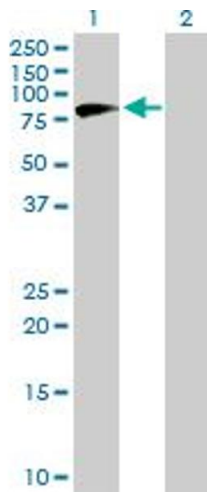
Storage Comment: Store at -20°C or lower. Aliquot to avoid repeated freezing and thawing.

---

## Publications

---

Product cited in: Her, Chung: "The AAA-ATPase NVL2 is a telomerase component essential for holoenzyme assembly." in: **Biochemical and biophysical research communications**, Vol. 417, Issue 3, pp. 1086-92, (2012) ([PubMed](#)).

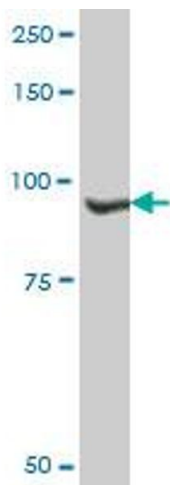


### Western Blotting

**Image 1.** Western Blot analysis of NVL expression in transfected 293T cell line by NVL MaxPab polyclonal antibody.

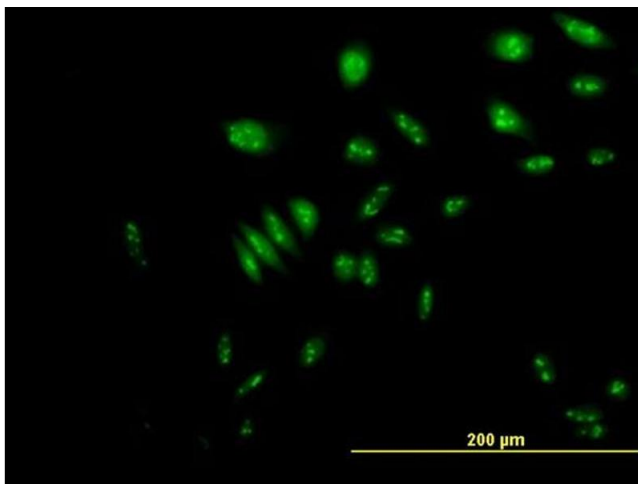
Lane 1: NVL transfected lysate(72.49 KDa).

Lane 2: Non-transfected lysate.



### Western Blotting

**Image 2.** NVL MaxPab polyclonal antibody. Western Blot analysis of NVL expression in human liver.



### Immunofluorescence

**Image 3.** Immunofluorescence of purified MaxPab antibody to NVL on HeLa cell. [antibody concentration 10 ug/ml]