



[Go to Product page](#)

Datasheet for ABIN518527

anti-OPA1 antibody (AA 851-960)

1 Image

Overview

Quantity:	100 µg
Target:	OPA1
Binding Specificity:	AA 851-960
Reactivity:	Human
Host:	Mouse
Clonality:	Monoclonal
Conjugate:	This OPA1 antibody is un-conjugated
Application:	ELISA

Product Details

Purpose:	Mouse monoclonal antibody raised against a partial recombinant OPA1.
Immunogen:	OPA1 (NP_056375, 851 a.a. ~ 960 a.a) partial recombinant protein with GST tag. MW of the GST tag alone is 26 KDa.
Sequence:	NHCNLCRRGF YYYQRHFVDS ELECNDVVLW WRIQRMLAIT ANTLRQQLTN TEVRRLEKNV KEVLEDAED GEKKIKLLTG KRVQLAEDLK KVREIQEKLD AFIEALHQEK
Clone:	1C10
Isotype:	IgG1
Cross-Reactivity:	Human
Characteristics:	Antibody Reactive Against Recombinant Protein.

Target Details

Target:	OPA1
Alternative Name:	OPA1 (OPA1 Products)
Background:	Full Gene Name: optic atrophy 1 (autosomal dominant) Synonyms: FLJ12460,KIAA0567,MGM1,NPG,NTG,largeG
Gene ID:	4976
NCBI Accession:	NM_015560
Pathways:	Tube Formation

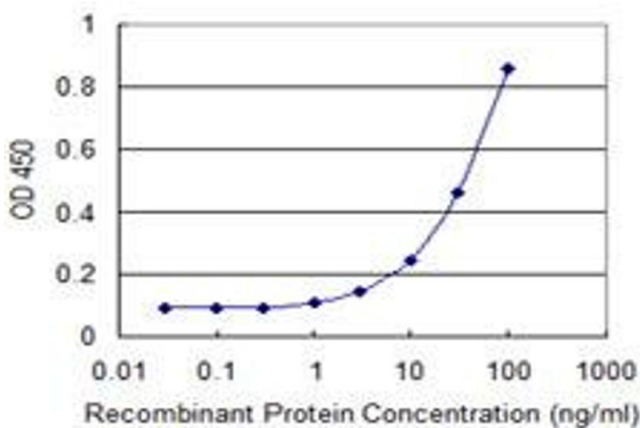
Application Details

Application Notes:	Optimal working dilution should be determined by the investigator.
Restrictions:	For Research Use only

Handling

Buffer:	In 1x PBS, pH 7.4
Handling Advice:	Aliquot to avoid repeated freezing and thawing.
Storage:	-20 °C
Storage Comment:	Store at -20°C or lower. Aliquot to avoid repeated freezing and thawing.

Images



ELISA

Image 1. Detection limit for recombinant GST tagged OPA1 is 1 ng/ml as a capture antibody.