



[Go to Product page](#)

Datasheet for ABIN518540

## anti-SLC22A18AS antibody (AA 144-253)

### 2 Images

#### Overview

Quantity:	50 µL
Target:	SLC22A18AS
Binding Specificity:	AA 144-253
Reactivity:	Human
Host:	Mouse
Clonality:	Polyclonal
Conjugate:	This SLC22A18AS antibody is un-conjugated
Application:	ELISA, Western Blotting (WB)

#### Product Details

Purpose:	Mouse polyclonal antibody raised against a partial recombinant SLC22A18AS.
Immunogen:	SLC22A18AS (NP_009036, 144 a.a. ~ 253 a.a) partial recombinant protein with GST tag.
Sequence:	EVVYSVPDNDV PGQNGSRRPL VCKITGKCLS VCSEENAKAG GCSAFPLLLS QLGARMTGRE HAHKGPELTT PDSGLPRPPN PALAGFRALA QHSPPLGTST PSAVLLSAAT
Cross-Reactivity:	Human
Characteristics:	Antibody Reactive Against Recombinant Protein.

#### Target Details

Target:	SLC22A18AS
Alternative Name:	SLC22A18AS ( <a href="#">SLC22A18AS Products</a> )

## Target Details

Background:	Full Gene Name: solute carrier family 22 (organic cation transporter), member 18 antisense Synonyms: BWR1B,BWSCR1B,ORCTL2S,SLC22A1LS,p27-BWR1B
Gene ID:	5003
NCBI Accession:	<a href="#">NM_007105</a>

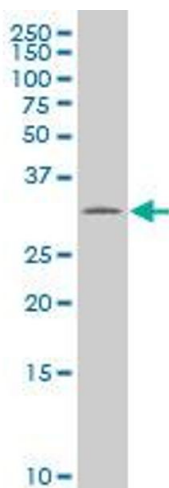
## Application Details

Application Notes:	Optimal working dilution should be determined by the investigator.
Restrictions:	For Research Use only

## Handling

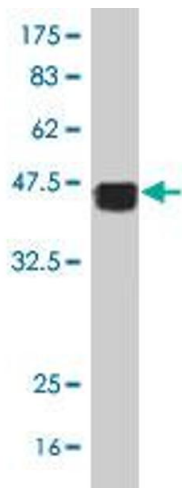
Format:	Liquid
Buffer:	50 % glycerol
Handling Advice:	Aliquot to avoid repeated freezing and thawing.
Storage:	-20 °C
Storage Comment:	Store at -20°C or lower. Aliquot to avoid repeated freezing and thawing.

## Images



### Western Blotting

**Image 1.** SLC22A18AS polyclonal antibody (A01), Lot # 061025JCS1 Western Blot analysis of SLC22A18AS expression in SJCRH30 .



### Western Blotting

**Image 2.** Western Blot detection against Immunogen (38.21 kDa).