



[Go to Product page](#)

Datasheet for ABIN518599
anti-PAI1 antibody (AA 1-402)

2 Images

1 Publication

Overview

Quantity:	50 µg
Target:	PAI1 (SERPINE1)
Binding Specificity:	AA 1-402
Reactivity:	Human
Host:	Mouse
Clonality:	Polyclonal
Conjugate:	This PAI1 antibody is un-conjugated
Application:	Western Blotting (WB)

Product Details

Purpose:	Mouse polyclonal antibody raised against a full-length human SERPINE1 protein.
Immunogen:	SERPINE1 (NP_000593.1, 1 a.a. ~ 402 a.a) full-length human protein.
Sequence:	<p>MQMSPALTCL VLGLALVFGE GSAVHHPPSY VAHLASDFGV RVFQQVAQAS KDRNVVFS GVASVLAMLQ LTTGGETQQQ IQAAMGFKID DKGMAPALRH LYKELMGPWN KDEISTDAI FVQRDLKLVQ GFMPHFFRLF RSTVKQVDFS EVERARFIIN DWVKTHTKGM ISNLLGKGA DQLTRLVLVN ALYFNGQWKT PFPDSSTHRR LFHKSDGSTV SVPMMQAQTNK FNYTEFTTPD GHYYDILELP YHGDTLSMFI AAPYEKEVPL SALTNILSAQ LISHWKGNMT RLPRLLVLPK FSLETEVDLR KPLENLGMTD MFRQFQADFT SLSDQEPLHV AQALQKVKIE VNESGTVA STAVIVSARM APEEIIMDRP FLFVVRHNPT GTVLFMGQVM EP</p>
Cross-Reactivity:	Human
Characteristics:	Antibody reactive against mammalian transfected lysate.

Target Details

Target:	PAI1 (SERPINE1)
Alternative Name:	SERPINE1 (SERPINE1 Products)
Background:	Full Gene Name: serpin peptidase inhibitor, clade E (nexin, plasminogen activator inhibitor type 1), member 1 Synonyms: PAI,PAI-1,PAI1,PLANH1
Gene ID:	5054
NCBI Accession:	NM_000602
Pathways:	p53 Signaling , Cellular Response to Molecule of Bacterial Origin , Carbohydrate Homeostasis , Autophagy , Smooth Muscle Cell Migration

Application Details

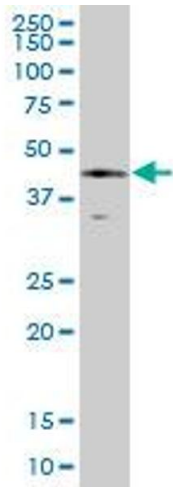
Application Notes:	Optimal working dilution should be determined by the investigator.
Restrictions:	For Research Use only

Handling

Buffer:	In 1x PBS, pH 7.4
Handling Advice:	Aliquot to avoid repeated freezing and thawing.
Storage:	-20 °C
Storage Comment:	Store at -20°C or lower. Aliquot to avoid repeated freezing and thawing.

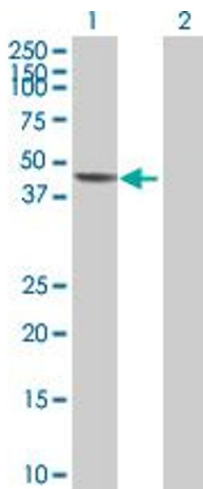
Publications

Product cited in:	Yentrapalli, Azimzadeh, Barjaktarovic, Sarioglu, Wojcik, Harms-Ringdahl, Atkinson, Haghdoost, Tapio: "Quantitative proteomic analysis reveals induction of premature senescence in human umbilical vein endothelial cells exposed to chronic low-dose rate gamma radiation." in: Proteomics , Vol. 13, Issue 7, pp. 1096-107, (2013) (PubMed).
-------------------	---



Western Blotting

Image 1. SERPINE1 MaxPab polyclonal antibody. Western Blot analysis of SERPINE1 expression in human spleen.



Western Blotting

Image 2. Western Blot analysis of SERPINE1 expression in transfected 293T cell line by SERPINE1 MaxPab polyclonal antibody.

Lane 1: SERPINE1 transfected lysate(44.22 KDa).

Lane 2: Non-transfected lysate.