



Datasheet for ABIN518601
anti-PAI1 antibody (AA 1-402)



[Go to Product page](#)

3 Images

Overview

| | |
|----------------------|---|
| Quantity: | 100 µL |
| Target: | PAI1 (SERPINE1) |
| Binding Specificity: | AA 1-402 |
| Reactivity: | Human |
| Host: | Rabbit |
| Clonality: | Polyclonal |
| Conjugate: | This PAI1 antibody is un-conjugated |
| Application: | Western Blotting (WB), Immunoprecipitation (IP) |

Product Details

| | |
|-------------------|--|
| Purpose: | Rabbit polyclonal antibody raised against a full-length human SERPINE1 protein. |
| Immunogen: | SERPINE1 (NP_000593.1, 1 a.a. ~ 402 a.a) full-length human protein. |
| Sequence: | MQMSPALTCL VLGLALVFGE GSAVHHPPSY VAHLASDFGV RVFQQVAQAS KDRNVVFSKY GVASVLAMLQ LTTGGETQQQ IQAAMGFKID DKGMAPALRH LYKELMGPWN KDEISTDAI FVQRDLKLVQ GFMPHFFRLF RSTVKQVDFS EVERARFIIN DWVKTHTKGM ISNLLGKGA DQLTRLVLVN ALYFNGQWKT PFPDSSTHRR LFHKSDGSTV SVPMMQAQTNK FNYTEFTTPD GHYYDILELP YHGDTLSMFI AAPYEKEVPL SALTNILSAQ LISHWKGNMT RLPRLLVLPK FSLETEVDLR KPLENLGMTD MFRQFQADFT SLSDQEPLHV AQALQKVKIE VNESGTVASS STAVIVSARM APEEIIIMDRP FLFVVRHNPT GTVLFMGQVM EP |
| Cross-Reactivity: | Human, Mouse |
| Characteristics: | Antibody reactive against mammalian transfected lysate. |

Target Details

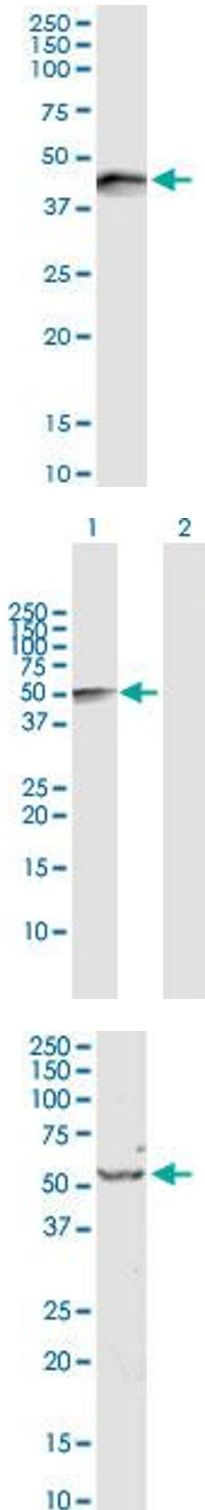
| | |
|-------------------|---|
| Target: | PAI1 (SERPINE1) |
| Alternative Name: | SERPINE1 (SERPINE1 Products) |
| Background: | Full Gene Name: serpin peptidase inhibitor, clade E (nexin, plasminogen activator inhibitor type 1), member 1 Synonyms: PAI,PAI-1,PAI1,PLANH1 |
| Gene ID: | 5054 |
| NCBI Accession: | NM_000602 |
| Pathways: | p53 Signaling , Cellular Response to Molecule of Bacterial Origin , Carbohydrate Homeostasis , Autophagy , Smooth Muscle Cell Migration |

Application Details

| | |
|--------------------|--|
| Application Notes: | Optimal working dilution should be determined by the investigator. |
| Restrictions: | For Research Use only |

Handling

| | |
|------------------|--|
| Format: | Liquid |
| Buffer: | No additive |
| Preservative: | Without preservative |
| Handling Advice: | Aliquot to avoid repeated freezing and thawing. |
| Storage: | -20 °C |
| Storage Comment: | Store at -20°C or lower. Aliquot to avoid repeated freezing and thawing. |



Immunoprecipitation

Image 1. Immunoprecipitation of SERPINE1 transfected lysate using anti-SERPINE1 MaxPab rabbit polyclonal antibody and Protein A Magnetic Bead , and immunoblotted with SERPINE1 purified MaxPab mouse polyclonal antibody (B01P) .

Western Blotting

Image 2. Western Blot analysis of SERPINE1 expression in transfected 293T cell line by SERPINE1 MaxPab polyclonal antibody.

Lane 1: SERPINE1 transfected lysate(45.1 KDa).

Lane 2: Non-transfected lysate.

Western Blotting

Image 3. SERPINE1 MaxPab rabbit polyclonal antibody. Western Blot analysis of SERPINE1 expression in mouse liver.