



[Go to Product page](#)

Datasheet for ABIN518608
anti-PAK2 antibody (AA 1-524)

1 Image

Overview

Quantity:	100 µg
Target:	PAK2
Binding Specificity:	AA 1-524
Reactivity:	Human
Host:	Rabbit
Clonality:	Polyclonal
Conjugate:	This PAK2 antibody is un-conjugated
Application:	Western Blotting (WB)

Product Details

Purpose:	Rabbit polyclonal antibody raised against a full-length human PAK2 protein.
Immunogen:	PAK2 (NP_002568.2, 1 a.a. ~ 524 a.a) full-length human protein.
Sequence:	MSDNGELEDK PPAPPVRMSS TIFSTGGKDP LSAHSLKPL PSVPEEKPR HKIISIFSGT EKGSKKKEKE RPEISPPSDF EHTIHVGFDA VTGEFTGMPE QWARLLQTSN ITKLEQKKNP QAVLDVLKFY DSNTVKQKYL SFTPPEKDG F PSGTPALNAK GTEAPAVVTE EEDDDEETAP PVIAPRPDHT KSIYTRVID PVPAPVGDSH VDGA AKSLDK QKKKTKMTDE EIMEKLRTIV SIGDPKKKYT RYEKIGQGAS GTVFTATDVA LGQEVAIKQI NLQKQPKKEL IINEILVMKE LKNPNIVNFL DSYLVGDEL F VVMEYLAGGS LTDVVTETCM DEAQIAAVCR ECLQALEFLH ANQVIHRDIK SDNVLLGMEG SVKLTDFGFC AQITPEQSKR STMVGTPTYWM APEVVTRKAY GPKVDIWSLG IMAIEMVEGE PPYLNENPLR ALYLIATNGT PELQNPEKLS PIFRDFLNRC LEMDVEKRG S AKELLQHPFL KLA KPLSSLT PLIMAAKEAM KSNR

Product Details

Cross-Reactivity:	Human
Characteristics:	Antibody reactive against mammalian transfected lysate.

Target Details

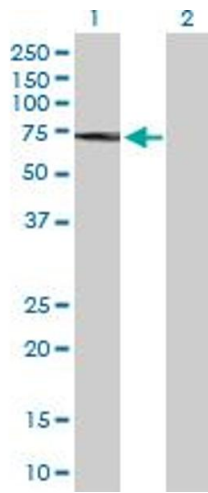
Target:	PAK2
Alternative Name:	PAK2 (PAK2 Products)
Background:	Full Gene Name: p21 protein (Cdc42/Rac)-activated kinase 2 Synonyms: PAK65,PAKgamma
Gene ID:	5062
NCBI Accession:	NM_002577
Pathways:	MAPK Signaling , RTK Signaling , TCR Signaling , Fc-epsilon Receptor Signaling Pathway , Regulation of Lipid Metabolism by PPARalpha

Application Details

Application Notes:	Optimal working dilution should be determined by the investigator.
Restrictions:	For Research Use only

Handling

Buffer:	In 1x PBS, pH 7.4
Handling Advice:	Aliquot to avoid repeated freezing and thawing.
Storage:	-20 °C
Storage Comment:	Store at -20°C or lower. Aliquot to avoid repeated freezing and thawing.



Western Blotting

Image 1. Western Blot analysis of PAK2 expression in transfected 293T cell line by PAK2 MaxPab polyclonal antibody.

Lane 1: PAK2 transfected lysate(58.00 KDa).

Lane 2: Non-transfected lysate.