



[Go to Product page](#)

Datasheet for ABIN518632
anti-PAX6 antibody (AA 1-422)

2 Images

1 Publication

Overview

Quantity:	50 µg
Target:	PAX6
Binding Specificity:	AA 1-422
Reactivity:	Human
Host:	Mouse
Clonality:	Polyclonal
Conjugate:	This PAX6 antibody is un-conjugated
Application:	Western Blotting (WB)

Product Details

Purpose:	Mouse polyclonal antibody raised against a full-length human PAX6 protein.
Immunogen:	PAX6 (NP_000271.1, 1 a.a. ~ 422 a.a) full-length human protein.
Sequence:	<p>MQNSHSGVNQ LGGVFNDRP LPDSTRQKIV ELAHSGARPC DISRILQVSN GCVSKILGRY YETGSIRPRA IGGSKPRVAT PEVVSIAQY KRECPSIFAW EIRDRLLESEG VCTNDNIPSV SSINRVLRLN ASEKQQMGAD GMYDKLRMLN GQTGSWGTRP GWYPGTSVPG QPTQDGCQQQ EGGENTNSI SSNGEDSDEA QMRLQLKRKL QRNRSTFTQE QIEALEKEFE RTHYPDVAFAR ERLAAKIDLP EARIQVWFSN RRAKWRREEK LRNQRQASN TPSHIPSSS FSTSVYQPIP QPTTPVSSFT SGSM LGRTDT ALTNTYSALP PMPSFTMANN LPMQPPVPSQ TSSYSCMLPT SPSVNGRSYD TYTPPHMQTH MNSQPMGTSG TTSTGLISPG VSVPVQVPGS EPDMSQYWPR LQ</p>
Cross-Reactivity:	Human
Characteristics:	Antibody reactive against mammalian transfected lysate.

Target Details

Target:	PAX6
Alternative Name:	PAX6 (PAX6 Products)
Background:	Full Gene Name: paired box 6 Synonyms: AN,AN2,D11S812E,MGC17209,MGDA,WAGR
Gene ID:	5080
NCBI Accession:	NM_000280
Pathways:	Peptide Hormone Metabolism , Carbohydrate Homeostasis

Application Details

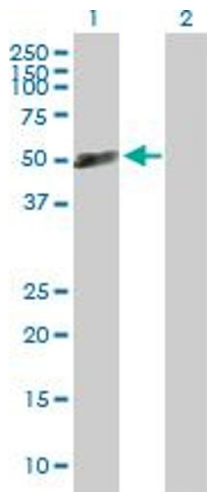
Application Notes:	Optimal working dilution should be determined by the investigator.
Restrictions:	For Research Use only

Handling

Buffer:	In 1x PBS, pH 7.4
Handling Advice:	Aliquot to avoid repeated freezing and thawing.
Storage:	-20 °C
Storage Comment:	Store at -20°C or lower. Aliquot to avoid repeated freezing and thawing.

Publications

Product cited in:	Vose, Vinukonda, Diamond, Korumilli, Hu, Zia, Hevner, Ballabh: "Prenatal betamethasone does not affect glutamatergic or GABAergic neurogenesis in preterm newborns." in: Neuroscience , Vol. 270, pp. 148-57, (2014) (PubMed).
-------------------	---

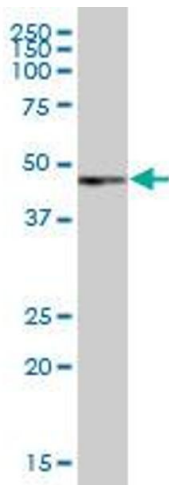


Western Blotting

Image 1. Western Blot analysis of PAX6 expression in transfected 293T cell line by PAX6 MaxPab polyclonal antibody.

Lane 1: PAX6 transfected lysate(46.42 KDa).

Lane 2: Non-transfected lysate.



Western Blotting

Image 2. PAX6 MaxPab polyclonal antibody. Western Blot analysis of PAX6 expression in human pancreas.