

Datasheet for ABIN518648
anti-PBX1 antibody (AA 311-403)[Go to Product page](#)

1 Image

Overview

Quantity:	100 µg
Target:	PBX1
Binding Specificity:	AA 311-403
Reactivity:	Human
Host:	Mouse
Clonality:	Monoclonal
Conjugate:	This PBX1 antibody is un-conjugated
Application:	Western Blotting (WB), ELISA

Product Details

Purpose:	Mouse monoclonal antibody raised against a full length recombinant PBX1.
Immunogen:	PBX1 (NP_002576, 311 a.a. ~ 403 a.a) full length recombinant protein with GST tag. MW of the GST tag alone is 26 KDa.
Sequence:	VTATNVSAHG SQANSPSTPN SAGSSSSFNM SNSGDLFMSV QSLNGDSYQG AQVGANVQSQ VDTLRHVISQ TGGYSDGLAA SQMYSPQGIS ANG
Clone:	2D6
Isotype:	IgG1
Cross-Reactivity:	Human
Characteristics:	Antibody Reactive Against Recombinant Protein.

Target Details

Target:	PBX1
Alternative Name:	PBX1 (PBX1 Products)
Background:	Full Gene Name: pre-B-cell leukemia homeobox 1 Synonyms: DKFZp686B09108,MGC126627
Gene ID:	5087
NCBI Accession:	NM_002585

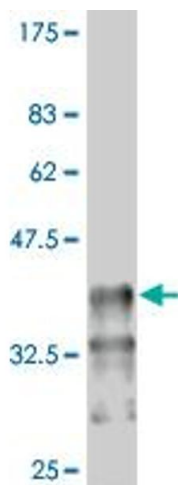
Application Details

Application Notes:	Optimal working dilution should be determined by the investigator.
Restrictions:	For Research Use only

Handling

Buffer:	In 1x PBS, pH 7.4
Handling Advice:	Aliquot to avoid repeated freezing and thawing.
Storage:	-20 °C
Storage Comment:	Store at -20°C or lower. Aliquot to avoid repeated freezing and thawing.

Images



Western Blotting

Image 1. Western Blot detection against Immunogen (36.23 KDa) .