



[Go to Product page](#)

Datasheet for ABIN518650
anti-PBX2 antibody (AA 1-430)

1 Image

Overview

Quantity:	100 µL
Target:	PBX2
Binding Specificity:	AA 1-430
Reactivity:	Human
Host:	Rabbit
Clonality:	Polyclonal
Conjugate:	This PBX2 antibody is un-conjugated
Application:	Immunoprecipitation (IP)

Product Details

Purpose:	Rabbit polyclonal antibody raised against a full-length human PBX2 protein.
Immunogen:	PBX2 (NP_002577.2, 1 a.a. ~ 430 a.a) full-length human protein.
Sequence:	MDERLLGPPP PGGGRGGLGL VSGEPGGPGE PPGGGDPGGG SGGVPGGRGK QDIGDILQQI MTITDQSLDE AQAKKHALNC HRMKPALFSV LCEIKEKTGL SIRSSQEEEP VDPQLMRLDN MLLAEGVAGP EKGGSAAAA AAAAASGGGV SPDNSIEHSD YRSKLAQIRH IYHSELEKYE QACNEFTTHV MNLLREQSRT RPVAPKEMER MVSIIHRKFS AIQMQLKQST CEAVMILRSR FLDARRKRRN FSKQATEVLN EYFYSHLSNP YPSEEAKEEL AKKCGITVSQ VSNWFGNKRI RYKKNIGKFQ EEANIYAVKT AVSVTQGGHS RTSSPTPPSS AGSGGSFNLS GSGDMFLGMP GLNGDSYSAS QVESLRHSMG PGGYGDNLGG GQMYSPREMR ANGSWQEAVT PSSVTSPTTEG PGSVHSDTSN
Cross-Reactivity:	Human

Product Details

Characteristics: Antibody reactive against mammalian transfected lysate.

Target Details

Target: PBX2

Alternative Name: PBX2 ([PBX2 Products](#))

Background: Full Gene Name: pre-B-cell leukemia homeobox 2
Synonyms: G17,HOX12,PBX2MHC

Gene ID: 5089

NCBI Accession: [NM_002586](#)

Pathways: [Skeletal Muscle Fiber Development](#)

Application Details

Application Notes: Optimal working dilution should be determined by the investigator.

Restrictions: For Research Use only

Handling

Format: Liquid

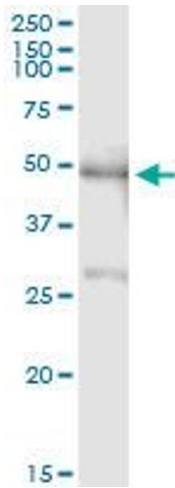
Buffer: No additive

Preservative: Without preservative

Handling Advice: Aliquot to avoid repeated freezing and thawing.

Storage: -20 °C

Storage Comment: Store at -20°C or lower. Aliquot to avoid repeated freezing and thawing.



Immunoprecipitation

Image 1. Immunoprecipitation of PBX2 transfected lysate using anti-PBX2 MaxPab rabbit polyclonal antibody and Protein A Magnetic Bead , and immunoblotted with PBX2 monoclonal antibody (M01), clone 2E9 .