



[Go to Product page](#)

Datasheet for ABIN518665

## anti-Protocadherin 1 antibody (AA 62-169)

### 2 Images

#### Overview

Quantity:	100 µg
Target:	Protocadherin 1 (PCDH1)
Binding Specificity:	AA 62-169
Reactivity:	Human
Host:	Mouse
Clonality:	Monoclonal
Conjugate:	This Protocadherin 1 antibody is un-conjugated
Application:	Western Blotting (WB), ELISA, Immunoprecipitation (IP)

#### Product Details

Purpose:	Mouse monoclonal antibody raised against a partial recombinant PCDH1.
Immunogen:	PCDH1 (NP_002578, 62 a.a. ~ 169 a.a) partial recombinant protein with GST tag. MW of the GST tag alone is 26 KDa.
Sequence:	YKVP EEQPPN TLIGSLAADY GFPDVGHLYK LEVGAPYLRV DGKTGDIFTT ETSIDREGLR ECQNQLPGDP CILEFEVSIT DLVQNGSPRL LEGQIEVQDI NDNTPNFA
Clone:	2E8
Isotype:	IgG2a
Cross-Reactivity:	Human
Characteristics:	Antibody Reactive Against Recombinant Protein.

## Target Details

Target:	Protocadherin 1 (PCDH1)
Alternative Name:	PCDH1 ( <a href="#">PCDH1 Products</a> )
Background:	Full Gene Name: protocadherin 1 Synonyms: FLJ53887,MGC45991,PC42,PCDH42
Gene ID:	5097
NCBI Accession:	<a href="#">NM_002587</a>

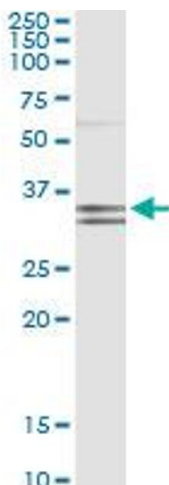
## Application Details

Application Notes:	Optimal working dilution should be determined by the investigator.
Restrictions:	For Research Use only

## Handling

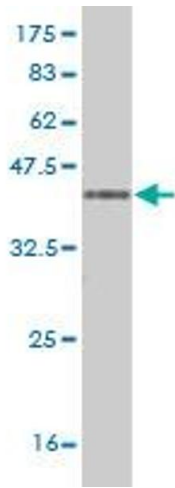
Buffer:	In 1x PBS, pH 7.4
Handling Advice:	Aliquot to avoid repeated freezing and thawing.
Storage:	-20 °C
Storage Comment:	Store at -20°C or lower. Aliquot to avoid repeated freezing and thawing.

## Images



### Immunoprecipitation

**Image 1.** Immunoprecipitation of PCDH1 transfected lysate using anti-PCDH1 monoclonal antibody and Protein A Magnetic Bead, and immunoblotted with PCDH1 MaxPab rabbit polyclonal antibody.



### Western Blotting

**Image 2.** Western Blot detection against Immunogen (37.62 KDa).