

Datasheet for ABIN518693  
**anti-PCNA antibody (AA 78-177)**

## 5 Images

[Go to Product page](#)

## Overview

Quantity:	100 µg
Target:	PCNA
Binding Specificity:	AA 78-177
Reactivity:	Human
Host:	Mouse
Clonality:	Monoclonal
Conjugate:	This PCNA antibody is un-conjugated
Application:	Western Blotting (WB), ELISA, Immunofluorescence (IF), Proximity Ligation Assay (PLA)

## Product Details

Purpose:	Mouse monoclonal antibody raised against a full length recombinant PCNA.
Immunogen:	PCNA (NP_002583, 78 a.a. ~ 177 a.a) full length recombinant protein with GST tag. MW of the GST tag alone is 26 KDa.
Sequence:	ILKCAGNEDI ITLRAEDNAD TLALVFEAPN QEKVSDYEMK LMDLDVEQLG IPEQEYSCVV KMPSGEFARI CRDLSHIGDA VVISCAKDG V KFSASGELGN
Clone:	2E9
Isotype:	IgG2a
Cross-Reactivity:	Human
Characteristics:	Antibody Reactive Against Recombinant Protein.

### Target Details

Target:	PCNA
Alternative Name:	PCNA ( <a href="#">PCNA Products</a> )
Background:	Full Gene Name: proliferating cell nuclear antigen Synonyms: MGC8367
Gene ID:	5111
NCBI Accession:	<a href="#">NM_002592</a>
Pathways:	<a href="#">Telomere Maintenance</a> , <a href="#">DNA Damage Repair</a> , <a href="#">Mitotic G1-G1/S Phases</a> , <a href="#">DNA Replication</a> , <a href="#">Synthesis of DNA</a> , <a href="#">Autophagy</a>

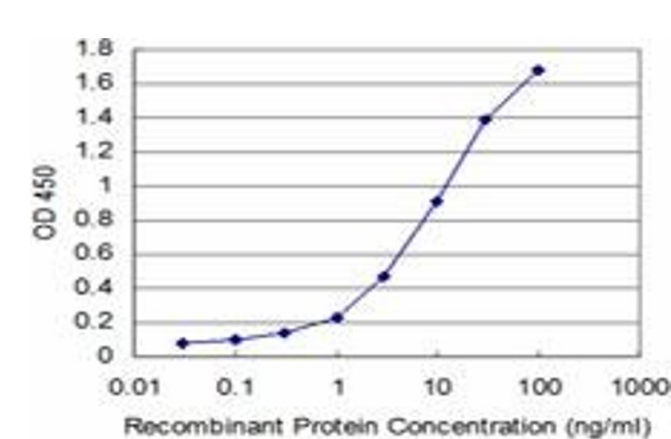
### Application Details

Application Notes:	Optimal working dilution should be determined by the investigator.
Restrictions:	For Research Use only

### Handling

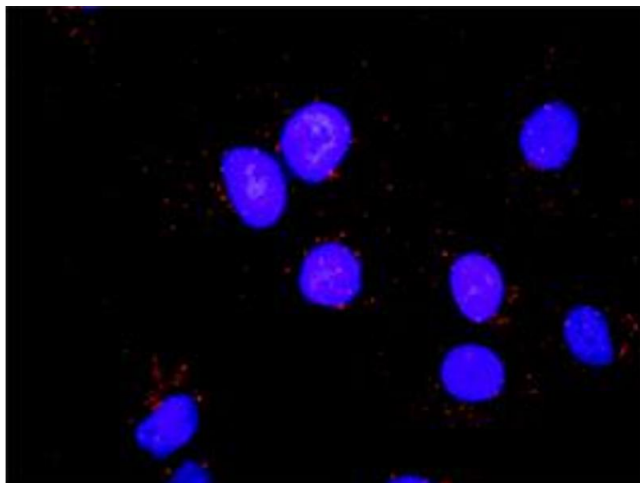
Buffer:	In 1x PBS, pH 7.4
Handling Advice:	Aliquot to avoid repeated freezing and thawing.
Storage:	-20 °C
Storage Comment:	Store at -20°C or lower. Aliquot to avoid repeated freezing and thawing.

### Images



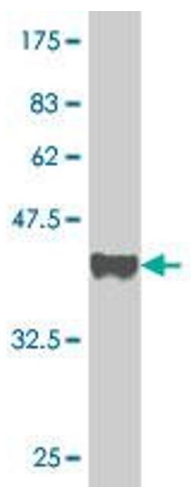
#### ELISA

**Image 1.** Detection limit for recombinant GST tagged PCNA is approximately 0.3ng/ml as a capture antibody.



#### Proximity Ligation Assay

**Image 2.** Proximity Ligation Analysis of protein-protein interactions between CDK2 and PCNA. Mahlavu cells were stained with anti-CDK2 rabbit purified polyclonal 1:1200 and anti-PCNA mouse monoclonal antibody 1:50. Each red dot represents the detection of protein-protein interaction complex, and nuclei were counterstained with DAPI (blue).



#### Western Blotting

**Image 3.** Western Blot detection against Immunogen (37 kDa).

Please check the [product details page](#) for more images. Overall 5 images are available for ABIN518693.