



[Go to Product page](#)

Datasheet for ABIN518700
anti-CHMP1A antibody (AA 1-196)

3 Images

Overview

Quantity:	50 µg
Target:	CHMP1A
Binding Specificity:	AA 1-196
Reactivity:	Human
Host:	Mouse
Clonality:	Polyclonal
Conjugate:	This CHMP1A antibody is un-conjugated
Application:	Western Blotting (WB), Immunofluorescence (IF)

Product Details

Purpose:	Mouse polyclonal antibody raised against a full-length human CHMP1A protein.
Immunogen:	CHMP1A (N/A, 1 a.a. ~ 196 a.a) full-length human protein.
Sequence:	MDDTLFQLKF TAKQLEKLAK KAEKDSKAEQ AKVVKALLQK NVECARVYAE NAIRKKNEGV NWLRMASRVD AVASKVQTAV TMKGVTKNMA QVTKALDKAL STMDLQKVSS VMDRFEQQVQ NLDVHTSVME DSMSSATTLT TPQEQVDSL I MQIAEENGL E VLDQLSQLPE GASAVGESSV RSQEDQLSRR LAALRN
Cross-Reactivity:	Human
Characteristics:	Antibody reactive against mammalian transfected lysate.

Target Details

Target:	CHMP1A
---------	--------

Target Details

Alternative Name:	CHMP1A (CHMP1A Products)
Background:	Full Gene Name: chromatin modifying protein 1A Synonyms: CHMP1,KIAA0047,PCOLN3,PRSM1
Gene ID:	5119

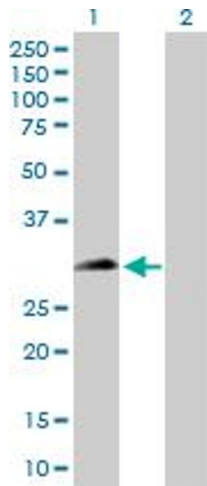
Application Details

Application Notes:	Optimal working dilution should be determined by the investigator.
Restrictions:	For Research Use only

Handling

Buffer:	In 1x PBS, pH 7.4
Handling Advice:	Aliquot to avoid repeated freezing and thawing.
Storage:	-20 °C
Storage Comment:	Store at -20°C or lower. Aliquot to avoid repeated freezing and thawing.

Images

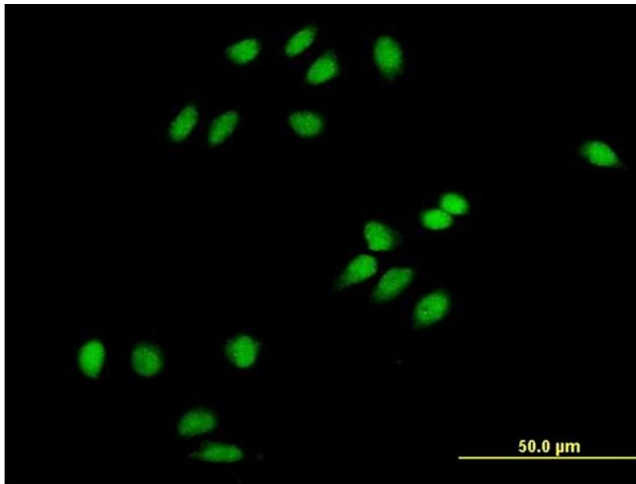


Western Blotting

Image 1. Western Blot analysis of CHMP1A expression in transfected 293T cell line by CHMP1A MaxPab polyclonal antibody.

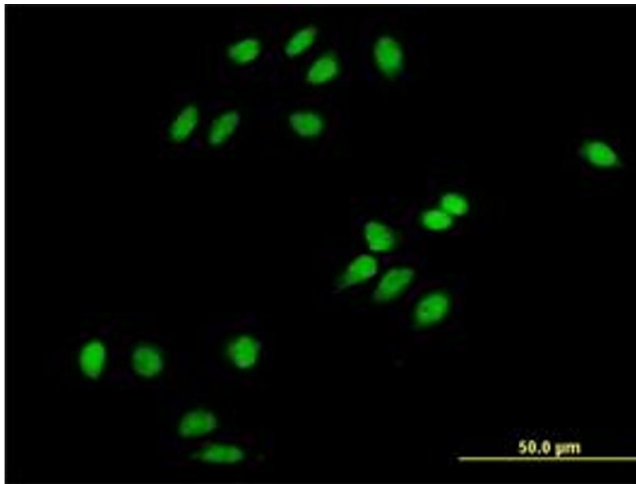
Lane 1: PCOLN3 transfected lysate(21.56 kDa).

Lane 2: Non-transfected lysate.



Immunofluorescence

Image 2. Immunofluorescence of purified MaxPab antibody to PCOLN3 on HeLa cell. [antibody concentration 10 µg/ml]



Immunofluorescence

Image 3. Immunofluorescence of purified MaxPab antibody to PCOLN3 on HeLa cell. (antibody concentration 10 µg/mL)