



[Go to Product page](#)

Datasheet for ABIN518720

anti-PDE3A antibody (AA 533-640)

3 Images

Overview

Quantity:	50 µg
Target:	PDE3A
Binding Specificity:	AA 533-640
Reactivity:	Human
Host:	Mouse
Clonality:	Monoclonal
Conjugate:	This PDE3A antibody is un-conjugated
Application:	Western Blotting (WB), ELISA, Immunofluorescence (IF)

Product Details

Purpose:	Mouse monoclonal antibody raised against a partial recombinant PDE3A.
Immunogen:	PDE3A (NP_000912, 533 a.a. ~ 640 a.a) partial recombinant protein with GST tag. MW of the GST tag alone is 26 KDa.
Sequence:	TPASSLVSKI SAVQFPESAD TTAKQSLGSH RALTYTQSAP DLSPQILTTP VICSSCGRPY SQGNPADEPL ERSGVATRTP SRTDDTAQVT SDYETNNNSD SSDIVQNE
Clone:	2D7
Isotype:	IgG2b
Cross-Reactivity:	Human
Characteristics:	Antibody Reactive Against Recombinant Protein.

Target Details

Target:	PDE3A
Alternative Name:	PDE3A (PDE3A Products)
Background:	Full Gene Name: phosphodiesterase 3A, cGMP-inhibited Synonyms: CGI-PDE
Gene ID:	5139
NCBI Accession:	NM_000921
Pathways:	cAMP Metabolic Process

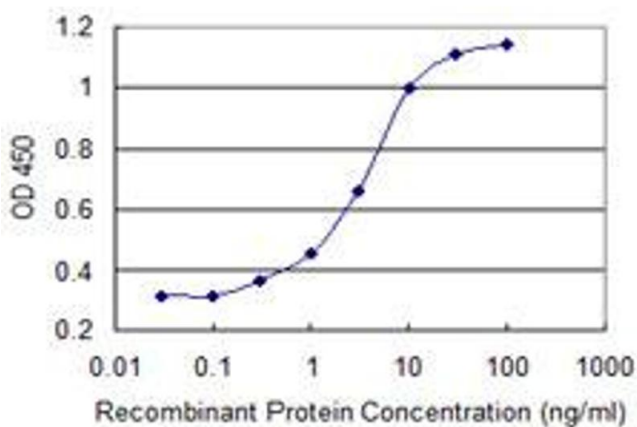
Application Details

Application Notes:	Optimal working dilution should be determined by the investigator.
Restrictions:	For Research Use only

Handling

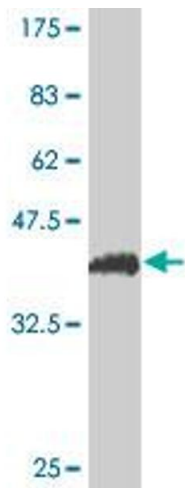
Buffer:	In 1x PBS, pH 7.4
Handling Advice:	Aliquot to avoid repeated freezing and thawing.
Storage:	-20 °C
Storage Comment:	Store at -20°C or lower. Aliquot to avoid repeated freezing and thawing.

Images



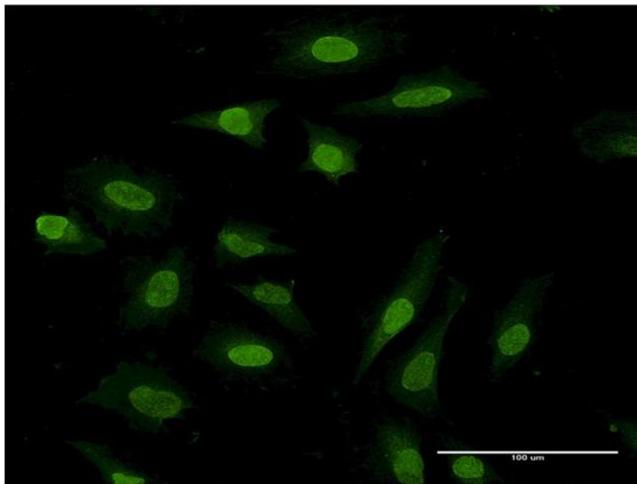
ELISA

Image 1. Detection limit for recombinant GST tagged PDE3A is 0.1 ng/ml as a capture antibody.



Western Blotting

Image 2. Western Blot detection against Immunogen (37.62 KDa).



Immunofluorescence

Image 3. Immunofluorescence of monoclonal antibody to PDE3A on HeLa cell. [antibody concentration 10 ug/ml]