



[Go to Product page](#)

Datasheet for ABIN518737

## anti-PDGFA antibody (AA 1-211)

### 3 Images

#### Overview

Quantity:	100 µg
Target:	PDGFA
Binding Specificity:	AA 1-211
Reactivity:	Human
Host:	Rabbit
Clonality:	Polyclonal
Conjugate:	This PDGFA antibody is un-conjugated
Application:	Western Blotting (WB), Proximity Ligation Assay (PLA)

#### Product Details

Purpose:	Rabbit polyclonal antibody raised against a full-length human PDGFA protein.
Immunogen:	PDGFA (NP_002598.4, 1 a.a. ~ 211 a.a) full-length human protein.
Sequence:	MRTLACLLLL GCGYLAHVLA EEAEIPREVI ERLARSQIHS IRDLQRLLEI DSVGSEDSLD TSLRAHGVHA TKHVPEKRPL PIRRKRSIEE AVPAVCKTRT VIYEIPRSQV DPTSANFLIW PPCVEVKRCT GCCNTSSVKC QPSRVHHRVS KVAKVEYVRK KPKLKEVQVR LEEHLECACA TTSLNPDYRE EDTGRPRESG KKRKRRLKP T
Cross-Reactivity:	Human
Characteristics:	Antibody reactive against mammalian transfected lysate.

#### Target Details

Target:	PDGFA
---------	-------

## Target Details

Alternative Name:	PDGFA ( <a href="#">PDGFA Products</a> )
Background:	Full Gene Name: platelet-derived growth factor alpha polypeptide Synonyms: PDGF-A,PDGF1
Gene ID:	5154
NCBI Accession:	<a href="#">NM_002607</a>
Pathways:	<a href="#">RTK Signaling</a> , <a href="#">Fc-epsilon Receptor Signaling Pathway</a> , <a href="#">EGFR Signaling Pathway</a> , <a href="#">Neurotrophin Signaling Pathway</a> , <a href="#">Smooth Muscle Cell Migration</a> , <a href="#">Platelet-derived growth Factor Receptor Signaling</a>

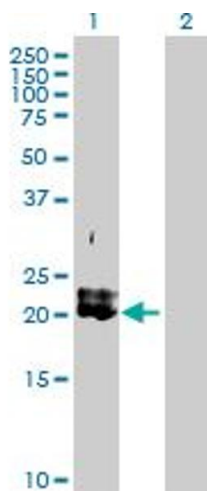
## Application Details

Application Notes:	Optimal working dilution should be determined by the investigator.
Restrictions:	For Research Use only

## Handling

Buffer:	In 1x PBS, pH 7.4
Handling Advice:	Aliquot to avoid repeated freezing and thawing.
Storage:	-20 °C
Storage Comment:	Store at -20°C or lower. Aliquot to avoid repeated freezing and thawing.

## Images

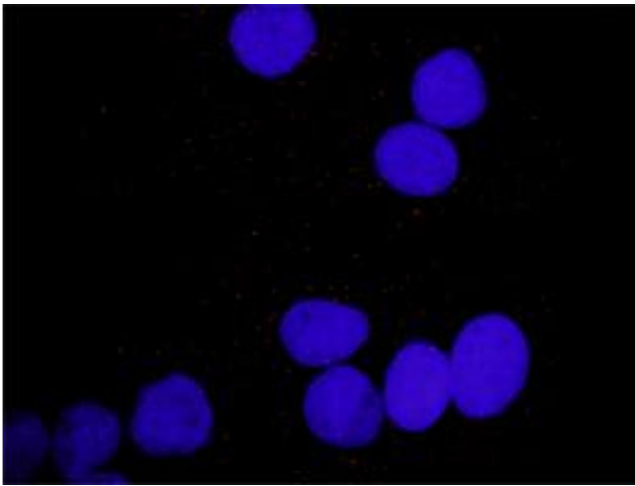


### Western Blotting

**Image 1.** Western Blot analysis of PDGFA expression in transfected 293T cell line by PDGFA MaxPab polyclonal antibody.

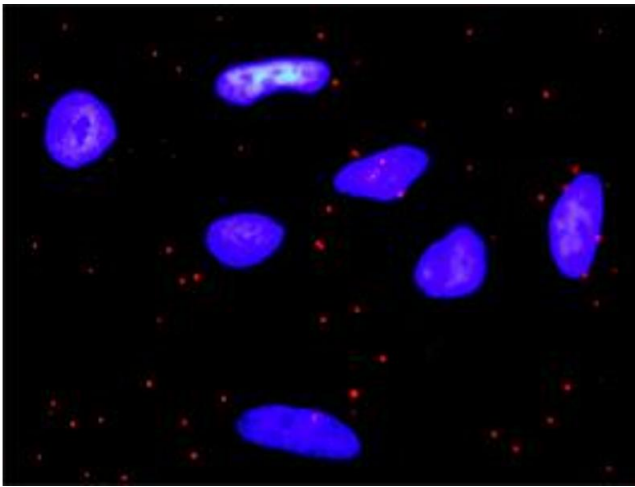
Lane 1: PDGFA transfected lysate(24.00 KDa).

Lane 2: Non-transfected lysate.



#### Proximity Ligation Assay

**Image 2.** Proximity Ligation Analysis of protein-protein interactions between PDGFA and PLCG1. Huh7 cells were stained with anti-PDGFA rabbit purified polyclonal 1:1200 and anti-PLCG1 mouse monoclonal antibody 1:50. Each red dot represents the detection of protein-protein interaction complex, and nuclei were counterstained with DAPI (blue).



#### Proximity Ligation Assay

**Image 3.** Proximity Ligation Analysis of protein-protein interactions between PDGFA and PDGFRA. HeLa cells were stained with anti-PDGFA rabbit purified polyclonal 1:1200 and anti-PDGFRα mouse monoclonal antibody 1:50. Each red dot represents the detection of protein-protein interaction complex, and nuclei were counterstained with DAPI (blue).