

## Datasheet for ABIN518743 anti-PDGFR $\alpha$ antibody (AA 25-218)



[Go to Product page](#)

2 Images

1 Publication

### Overview

Quantity:	100 $\mu$ g
Target:	PDGFR $\alpha$
Binding Specificity:	AA 25-218
Reactivity:	Human
Host:	Mouse
Clonality:	Monoclonal
Conjugate:	This PDGFR $\alpha$ antibody is un-conjugated
Application:	Western Blotting (WB), ELISA, Proximity Ligation Assay (PLA)

### Product Details

Purpose:	Mouse monoclonal antibody raised against a full-length recombinant PDGFR $\alpha$ .
Immunogen:	PDGFR $\alpha$ (AAH15186, 25 a.a. ~ 218 a.a) full-length recombinant protein with GST tag. MW of the GST tag alone is 26 KDa.
Sequence:	LSLPSILPNE NEKVVQLNSS FSLRCFGESE VSWQYPMSEE ESSDVEIRNE ENNSGLFVTV LEVSSASAAH TGLYTCYYNH TQTEENELEG RHIIYIVPDP DVAFVPLGMT DYLVIVEDDD SAIIPCRTTD PETPVTLHNS EGVVPASYDS RQGFNGTFTV GPYICEATVK GKKEFTIPFN VYALKGTCII SFLL
Clone:	4H1-1C9
Isotype:	IgG1
Cross-Reactivity:	Human

## Product Details

Characteristics: Antibody Reactive Against Recombinant Protein.

## Target Details

Target:	PDGFRA
Alternative Name:	PDGFRA ( <a href="#">PDGFRA Products</a> )
Background:	Full Gene Name: platelet-derived growth factor receptor, alpha polypeptide Synonyms: CD140A,MGC74795,PDGFR2,Rhe-PDGFR
Gene ID:	5156
Pathways:	<a href="#">RTK Signaling</a> , <a href="#">Fc-epsilon Receptor Signaling Pathway</a> , <a href="#">EGFR Signaling Pathway</a> , <a href="#">Neurotrophin Signaling Pathway</a> , <a href="#">Platelet-derived growth Factor Receptor Signaling</a>

## Application Details

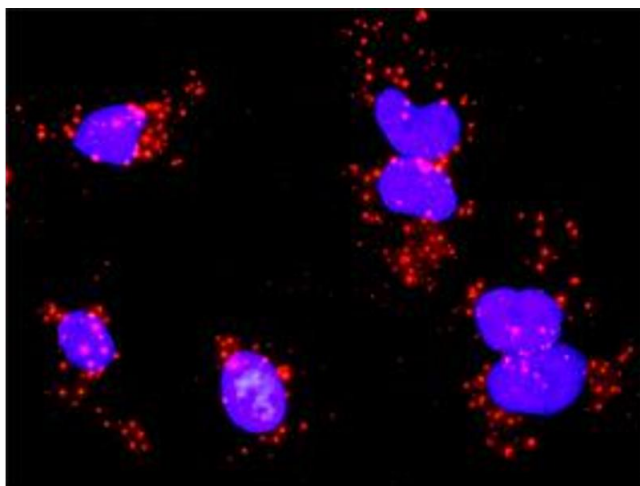
Application Notes:	Optimal working dilution should be determined by the investigator.
Restrictions:	For Research Use only

## Handling

Buffer:	In 1x PBS, pH 7.4
Handling Advice:	Aliquot to avoid repeated freezing and thawing.
Storage:	-20 °C
Storage Comment:	Store at -20°C or lower. Aliquot to avoid repeated freezing and thawing.

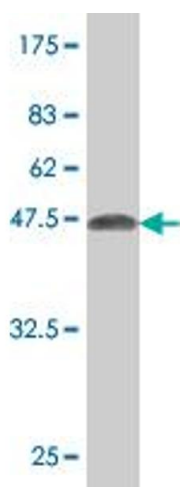
## Publications

Product cited in:	Dugas, Cuellar, Scholze, Ason, Ibrahim, Emery, Zamanian, Foo, McManus, Barres: "Dicer1 and miR-219 Are required for normal oligodendrocyte differentiation and myelination." in: <b>Neuron</b> , Vol. 65, Issue 5, pp. 597-611, (2010) ( <a href="#">PubMed</a> ).
-------------------	--



### Proximity Ligation Assay

**Image 1.** Proximity Ligation Analysis of protein-protein interactions between CRK and PDGFRA. HeLa cells were stained with anti-CRK rabbit purified polyclonal 1:1200 and anti-PDGFR $\alpha$  mouse monoclonal antibody 1:50. Each red dot represents the detection of protein-protein interaction complex, and nuclei were counterstained with DAPI (blue).



### Western Blotting

**Image 2.** Western Blot detection against Immunogen (47.08 KDa) .