

Datasheet for ABIN518748
anti-PDHA2 antibody (AA 1-388)



[Go to Product page](#)

2 Images

Overview

Quantity:	50 µg
Target:	PDHA2 (PDHa2)
Binding Specificity:	AA 1-388
Reactivity:	Human
Host:	Mouse
Clonality:	Polyclonal
Conjugate:	This PDHA2 antibody is un-conjugated
Application:	Western Blotting (WB), Immunofluorescence (IF)

Product Details

Purpose:	Mouse polyclonal antibody raised against a full-length human PDHA2 protein.
Immunogen:	PDHA2 (NP_005381.1, 1 a.a. ~ 388 a.a) full-length human protein.
Sequence:	MLAAFISRVL RRVAQKSARR VLVASRNSSN DATFEIKKCD LYLLEEGPPV TTVLTRA EGL KYYRMMLTVR RMELKADQLY KQKFIRGFCH LCDGQEACCV GLEAGINPSD HVITSYRAHG VCYTRGLSVR SILAELTGRR GGCAKGGKGS MHMYTKNFY GNGIVGAQGP LGAGIALACK YKGNDEICLT LYGDGAANQG QIAEAFNMAA LWKLPCVFIC ENNLYGMGTS TERAASPDY YKRGNFIPGL KVDGMDVLCV REATKFAANY CRSGKGPILM ELQTYRYHGH SMSDPGVS YR TREEIQEVRS KRDP IILQD RMVNSKLATV EELKEIGAEV RKEIDDAAQF ATTDPEPHLE ELGHHIYSSD SSFEVRGANP WIKFKSVS
Cross-Reactivity:	Human
Characteristics:	Antibody reactive against mammalian transfected lysate.

Target Details

Target:	PDHA2 (PDHa2)
Alternative Name:	PDHA2 (PDHa2 Products)
Background:	Full Gene Name: pyruvate dehydrogenase (lipoamide) alpha 2 Synonyms: MGC149517,MGC149518,PDHAL
Gene ID:	5161
NCBI Accession:	NM_005390
Pathways:	Warburg Effect

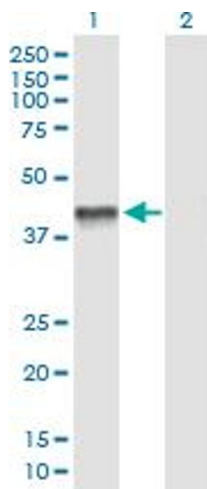
Application Details

Application Notes:	Optimal working dilution should be determined by the investigator.
Restrictions:	For Research Use only

Handling

Buffer:	In 1x PBS, pH 7.4
Handling Advice:	Aliquot to avoid repeated freezing and thawing.
Storage:	-20 °C
Storage Comment:	Store at -20°C or lower. Aliquot to avoid repeated freezing and thawing.

Images

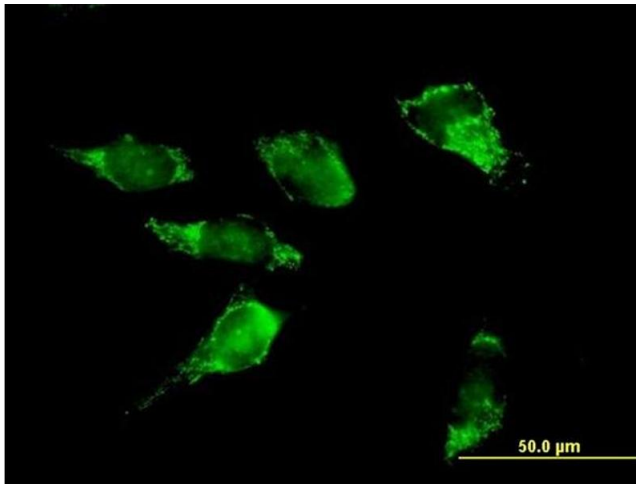


Western Blotting

Image 1. Western Blot analysis of PDHA2 expression in transfected 293T cell line by PDHA2 MaxPab polyclonal antibody.

Lane 1: PDHA2 transfected lysate(42.68 kDa).

Lane 2: Non-transfected lysate.



Immunofluorescence

Image 2. Immunofluorescence of purified MaxPab antibody to PDHA2 on HeLa cell. [antibody concentration 10 ug/ml]