



[Go to Product page](#)

Datasheet for ABIN518833  
**anti-PLGF antibody (AA 1-170)**

2 Images

Overview

Quantity:	100 µg
Target:	PLGF (PGF)
Binding Specificity:	AA 1-170
Reactivity:	Human
Host:	Rabbit
Clonality:	Polyclonal
Conjugate:	This PLGF antibody is un-conjugated
Application:	Western Blotting (WB), Proximity Ligation Assay (PLA)

Product Details

Purpose:	Rabbit polyclonal antibody raised against a full-length human PGF protein.
Immunogen:	PGF (NP_002623.2, 1 a.a. ~ 170 a.a) full-length human protein.
Sequence:	MPVMRLFPCF LQLLAGLALP AVPPQQWALS AGNGSSEVEV VPFQEVWGRS YCRALERLVD VVSEYPSEVE HMFSPSCVSL LRCTGCCGDE NLHCVPVETA NVTMQLLKIR SGDRPSYVEL TFSQHVRCEC RPLREKMKPE RRRPKGRGKR RREKQRPTDC HLCGDAVPRR
Cross-Reactivity:	Human
Characteristics:	Antibody reactive against mammalian transfected lysate.

Target Details

Target:	PLGF (PGF)
---------	------------

## Target Details

Alternative Name:	PGF ( <a href="#">PGF Products</a> )
Background:	Full Gene Name: placental growth factor Synonyms: D12S1900,PGFL,PLGF,PIGF-2,SHGC-10760
Gene ID:	5228
NCBI Accession:	<a href="#">NM_002632</a>
Pathways:	<a href="#">VEGFR1 Specific Signals</a>

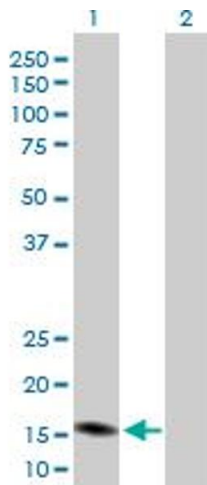
## Application Details

Application Notes:	Optimal working dilution should be determined by the investigator.
Restrictions:	For Research Use only

## Handling

Buffer:	In 1x PBS, pH 7.4
Handling Advice:	Aliquot to avoid repeated freezing and thawing.
Storage:	-20 °C
Storage Comment:	Store at -20°C or lower. Aliquot to avoid repeated freezing and thawing.

## Images

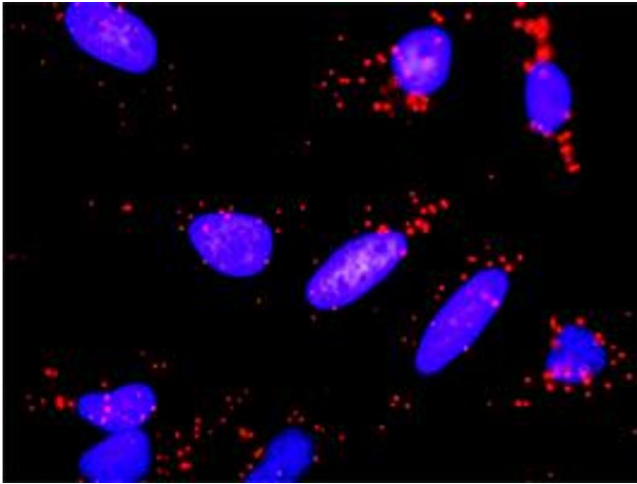


### Western Blotting

**Image 1.** Western Blot analysis of PGF expression in transfected 293T cell line by PGF MaxPab polyclonal antibody.

Lane 1: PGF transfected lysate(19.30 kDa).

Lane 2: Non-transfected lysate.



### Proximity Ligation Assay

**Image 2.** Proximity Ligation Analysis of protein-protein interactions between PGF and VEGFA. HeLa cells were stained with anti-PGF rabbit purified polyclonal 1:1200 and anti-VEGFA mouse monoclonal antibody 1:50. Each red dot represents the detection of protein-protein interaction complex, and nuclei were counterstained with DAPI (blue).