



Datasheet for ABIN518842  
**anti-SLC25A3 antibody (AA 1-361)**



[Go to Product page](#)

3 Images

Overview

Quantity:	50 µg
Target:	SLC25A3
Binding Specificity:	AA 1-361
Reactivity:	Human
Host:	Mouse
Clonality:	Polyclonal
Conjugate:	This SLC25A3 antibody is un-conjugated
Application:	Western Blotting (WB), Immunofluorescence (IF)

Product Details

Purpose:	Mouse polyclonal antibody raised against a full-length human SLC25A3 protein.
Immunogen:	SLC25A3 (NP_002626.1, 1 a.a. ~ 361 a.a) full-length human protein.
Sequence:	MFSSVAHLAR ANPFNTPHLQ LVHDGLGDLR SSSPGPTGQP RRPRNLAAAA VEEYSCEFGS AKYYALCGFG GVLSCLTHT AVVPLDLVKC RMQVDPQKYK GIFNGFSVTL KEDGVRGLAK GWAPTFLGYS MQGLCKFGFY EVFKVLYSNM LGEENTYLWR TSLYLAASAS AEFADIALA PMEAAKVRIQ TQPGYANTLR DAAPKMYKEE GLKAFYKGVA PLWMRQIPYT MMKFACFERT VEALYKFVVP KPRSECSKPE QLVVTFVAGY IAGVFCAIVS HPADSVVSVL NKEKGSSASL VLKRLGFKGV WKGLFARIIM IGTLTALQWF IYDSVKVYFR LPRPPPEMP ESLKKKLGLT Q
Cross-Reactivity:	Human
Characteristics:	Antibody reactive against mammalian transfected lysate.

## Target Details

Target:	SLC25A3
Alternative Name:	SLC25A3 ( <a href="#">SLC25A3 Products</a> )
Background:	Full Gene Name: solute carrier family 25 (mitochondrial carrier, phosphate carrier), member 3 Synonyms: OK/SW-cl.48,PHC
Gene ID:	5250

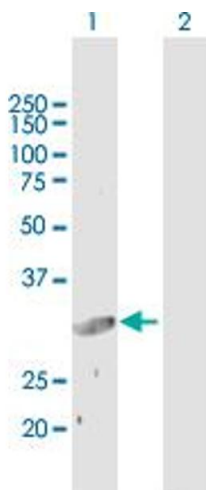
## Application Details

Application Notes:	Optimal working dilution should be determined by the investigator.
Restrictions:	For Research Use only

## Handling

Buffer:	In 1x PBS, pH 7.4
Handling Advice:	Aliquot to avoid repeated freezing and thawing.
Storage:	-20 °C
Storage Comment:	Store at -20°C or lower. Aliquot to avoid repeated freezing and thawing.

## Images

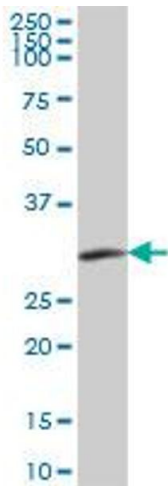


### Western Blotting

**Image 1.** Western Blot analysis of SLC25A3 expression in transfected 293T cell line by SLC25A3 MaxPab polyclonal antibody.

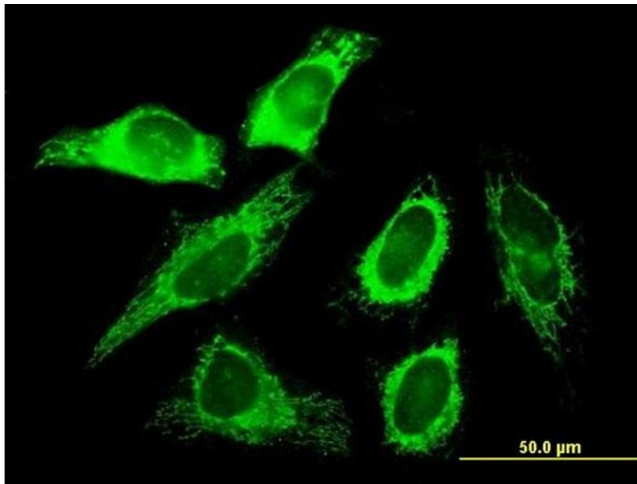
Lane 1: SLC25A3 transfected lysate(39.71 KDa).

Lane 2: Non-transfected lysate.



### Western Blotting

**Image 2.** SLC25A3 MaxPab polyclonal antibody. Western Blot analysis of SLC25A3 expression in human pancreas.



### Immunofluorescence

**Image 3.** Immunofluorescence of purified MaxPab antibody to SLC25A3 on HeLa cell. [antibody concentration 10 ug/ml]