



[Go to Product page](#)

Datasheet for ABIN518874

## anti-SERPINB8 antibody (AA 1-242)

### 1 Image

#### Overview

Quantity:	200 µL
Target:	SERPINB8
Binding Specificity:	AA 1-242
Reactivity:	Human
Host:	Mouse
Clonality:	Monoclonal
Conjugate:	This SERPINB8 antibody is un-conjugated
Application:	ELISA, Western Blotting (WB)

#### Product Details

Purpose:	Mouse monoclonal antibody raised against a full-length recombinant SERPINB8.
Immunogen:	SERPINB8 (AAH34528, 1 a.a. ~ 242 a.a) full-length recombinant protein with GST tag. MW of the GST tag alone is 26 KDa.
Sequence:	MDDLCEANGT FAISLFKILG EEDNSRNVFF SPMSISSALA MVFMGAKGST AAQMSQALCL YKGDGIHRGF QLLSEVNRT GTQYLLRTAN RLFGEKTCDF LPDFKEYCQK FYQAELEELS FAEDTEECRK HINDWVAEKT EGKISEVLDA GTVDPLTKLV LVNAIYFKGK WNEQFDRKYT RGMLFKTNEE KKTVMFMFKE AKFKMGYADE VHTQVLELPY VEEELSMVIL LPDDNTDLAV KE
Clone:	1D10
Isotype:	IgM kappa
Cross-Reactivity:	Human

## Target Details

Target:	SERPINB8
Alternative Name:	SERPINB8 ( <a href="#">SERPINB8 Products</a> )
Background:	Full Gene Name: serpin peptidase inhibitor, clade B (ovalbumin), member 8 Synonyms: CAP2,PI8
Gene ID:	5271

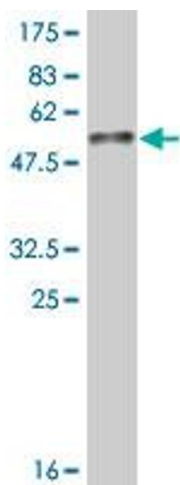
## Application Details

Application Notes:	Optimal working dilution should be determined by the investigator.
Comment:	Product Quality tested by: Antibody Reactive Against Recombinant Protein.
Restrictions:	For Research Use only

## Handling

Format:	Liquid
Buffer:	In ascites fluid
Handling Advice:	Aliquot to avoid repeated freezing and thawing.
Storage:	-20 °C
Storage Comment:	Store at -20°C or lower. Aliquot to avoid repeated freezing and thawing.

## Images



### Western Blotting

**Image 1.** Western Blot detection against Immunogen (52.36 KDa) .