



[Go to Product page](#)

Datasheet for ABIN518876

## anti-SERPINB9 antibody (AA 279-375)

### 2 Images

#### Overview

Quantity:	100 µg
Target:	SERPINB9
Binding Specificity:	AA 279-375
Reactivity:	Human
Host:	Mouse
Clonality:	Monoclonal
Conjugate:	This SERPINB9 antibody is un-conjugated
Application:	ELISA, Immunohistochemistry (Paraffin-embedded Sections) (IHC (p))

#### Product Details

Purpose:	Mouse monoclonal antibody raised against a partial recombinant SERPINB9.
Immunogen:	SERPINB9 (NP_004146, 279 a.a. ~ 375 a.a) partial recombinant protein with GST tag. MW of the GST tag alone is 26 KDa.
Sequence:	DMESVLRHLG IVDAFQQGKA DLSAMSAERD LCLKFVHKS FVEVNEEGTE AAAASSCFVV AECCMESGPR FCADHPFLFF IRHNRANSIL FCGRFSS
Clone:	1F5
Isotype:	IgG2a
Cross-Reactivity:	Human
Characteristics:	Antibody Reactive Against Recombinant Protein.

## Target Details

Target:	SERPINB9
Alternative Name:	SERPINB9 ( <a href="#">SERPINB9 Products</a> )
Background:	Full Gene Name: serpin peptidase inhibitor, clade B (ovalbumin), member 9 Synonyms: CAP-3,CAP3,PI9
Gene ID:	5272
NCBI Accession:	<a href="#">NM_004155</a>

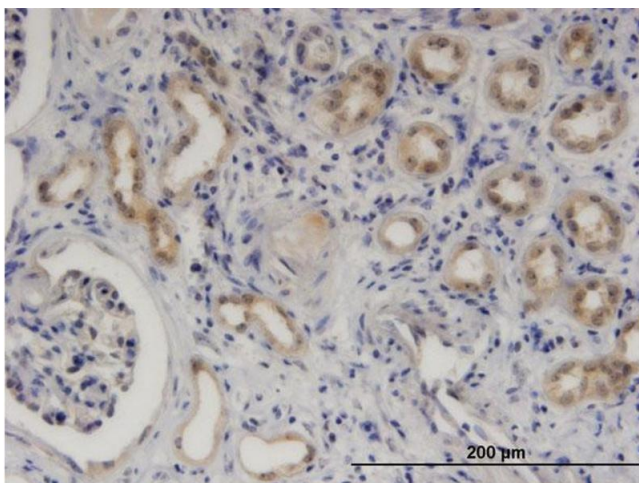
## Application Details

Application Notes:	Optimal working dilution should be determined by the investigator.
Restrictions:	For Research Use only

## Handling

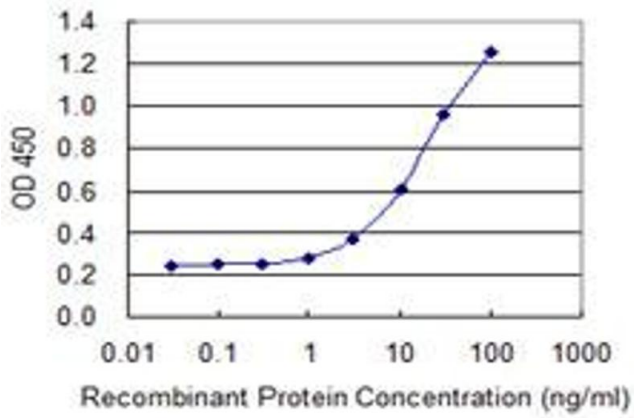
Buffer:	In 1x PBS, pH 7.4
Handling Advice:	Aliquot to avoid repeated freezing and thawing.
Storage:	-20 °C
Storage Comment:	Store at -20°C or lower. Aliquot to avoid repeated freezing and thawing.

## Images



### Immunostaining

**Image 1.** Immunoperoxidase of monoclonal antibody to SERPINB9 on formalin-fixed paraffin-embedded human kidney. [antibody concentration 3 ug/ml]



## ELISA

**Image 2.** Detection limit for recombinant GST tagged SERPINB9 is 0.3 ng/ml as a capture antibody.